

NDB RUE <b>379</b>	APP CRS <b>360°</b>	Rwy Idg TDZE Apt Elev	<b>N/A</b> <b>N/A</b> <b>409</b>
-----------------------	------------------------	-----------------------------	--

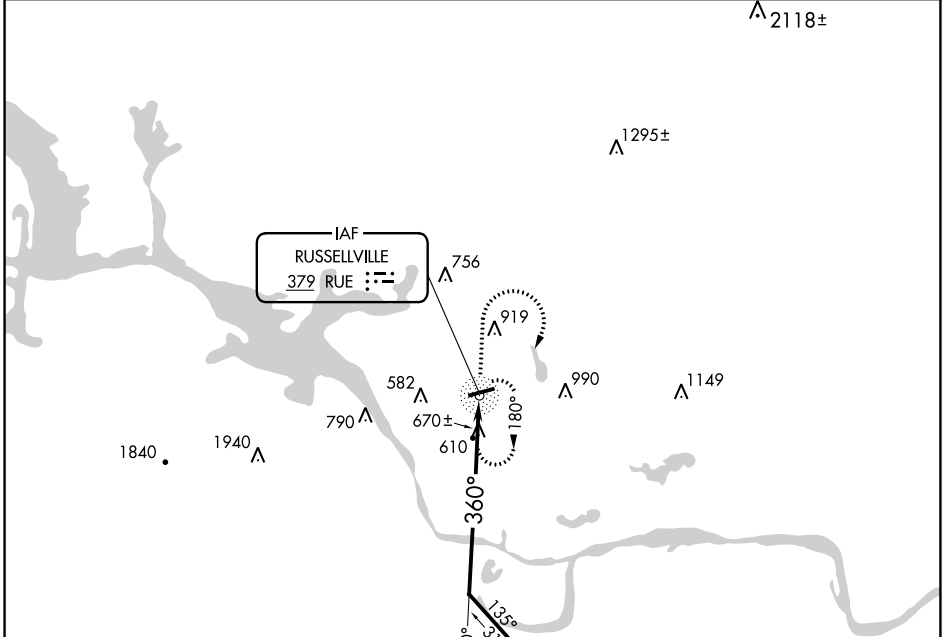
# NDB-A

RUSSELLVILLE RGNL (RUE)

**▲** NA

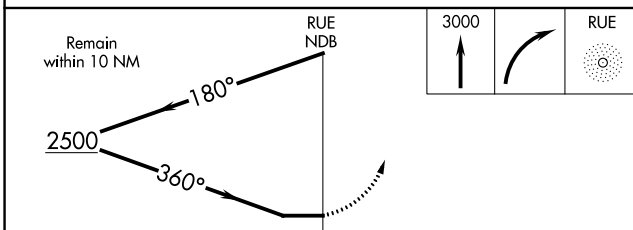
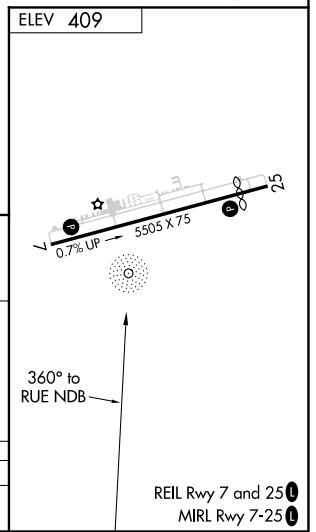
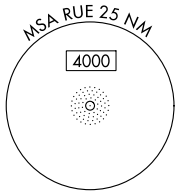
MISSED APPROACH: Climb to 3000 then right turn direct RUE NDB and hold.

ASOS <b>132.475</b>	MEMPHIS CENTER <b>128.475 377.15</b>	UNICOM <b>122.7 (CTAF)</b> <b>U</b>
------------------------	---	--



SC-1, 07 OCT 2021 to 04 NOV 2021

SC-1, 07 OCT 2021 to 04 NOV 2021



CATEGORY	A	B	C	D
CIRCLING	1 240-1¼	831 (900-1¼)	1 340-2¾ 931 (1000-2¾)	1400-3 991 (1000-3)

REIL Rwy 7 and 25 **U**  
MIRL Rwy 7-25 **U**