

APCH CRS **063°**  
 Rwy ldg **6000**  
 TDZE **387**  
 Arpt Elev **433**

AL-6341 [USA]

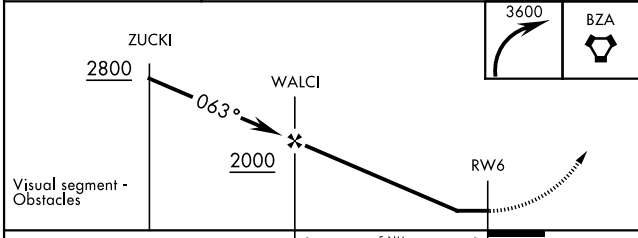
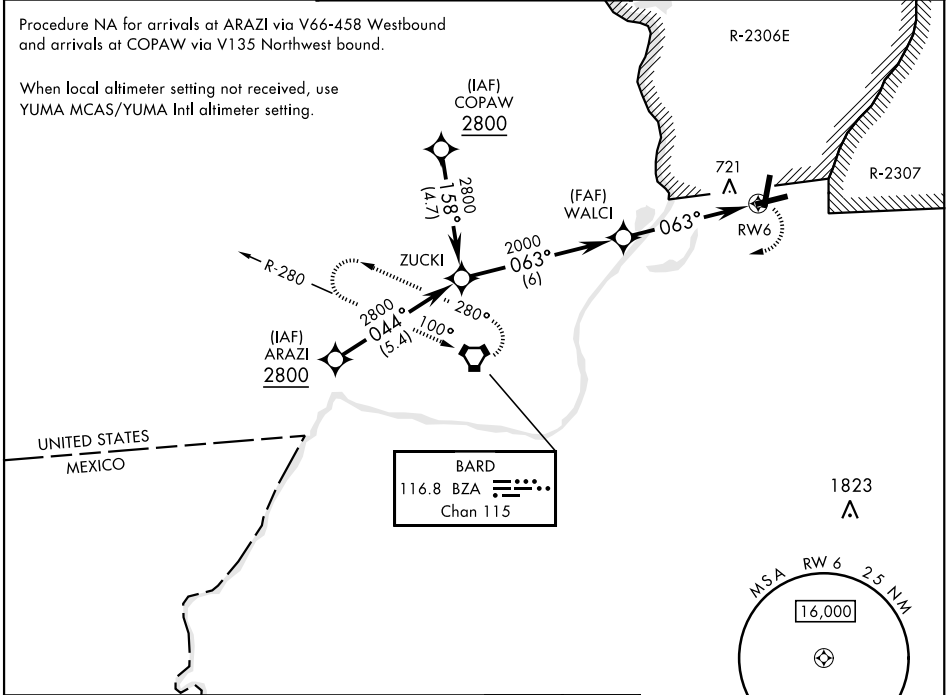
LAGUNA AAF (KLGf)

**▽** DME/DME RNP-0.3 NA  
**▲** NA Procedure NA when airfield closed.  
 MISSED APPROACH: Climbing right turn to 3600 direct BZA VORTAC and hold.

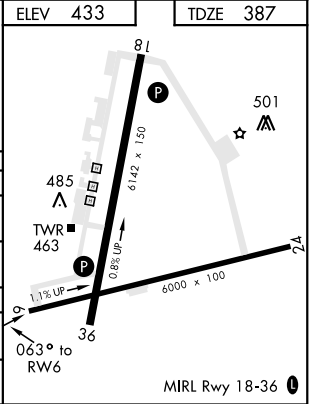
YUMA APP CON **124.7 374.8**      LAGUNA TOWER ★ **126.2 (CTAF) 242.175**      GND CON **121.8 0 229.4**

Procedure NA for arrivals at ARAZI via V66-458 Westbound and arrivals at COPAW via V135 Northwest bound.

When local altimeter setting not received, use YUMA MCAS/YUMA Intl altimeter setting.



ELEV 433	TDZE 387
----------	----------



CATEGORY	A	B	C	D
LNAV MDA	1020-1	633 (600-1)	1020-1¾ 633 (600-1¾)	1020-2 633 (600-2)
CIRCLING	1080-1	647 (700-1)	1080-1¾ 647 (700-1¾)	1080-2 647 (700-2)
YUMA MCAS/YUMA Intl ALTIMETER SETTING				
LNAV MDA	1100-1	713 (700-1)	1100-2 713 (700-2)	1100-2¼ 713 (700-2¼)
CIRCLING	1160-1	727 (800-1)	1160-2 727 (800-2)	1160-2¼ 727 (800-2¼)

SW-4, 07 OCT 2021 to 04 NOV 2021

SW-4, 07 OCT 2021 to 04 NOV 2021