

YUMA PROVING GROUND, ARIZONA

VOR RWY 6

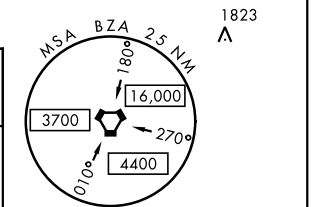
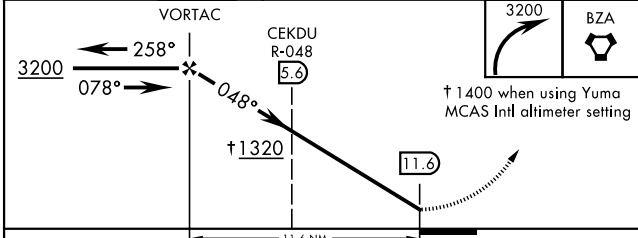
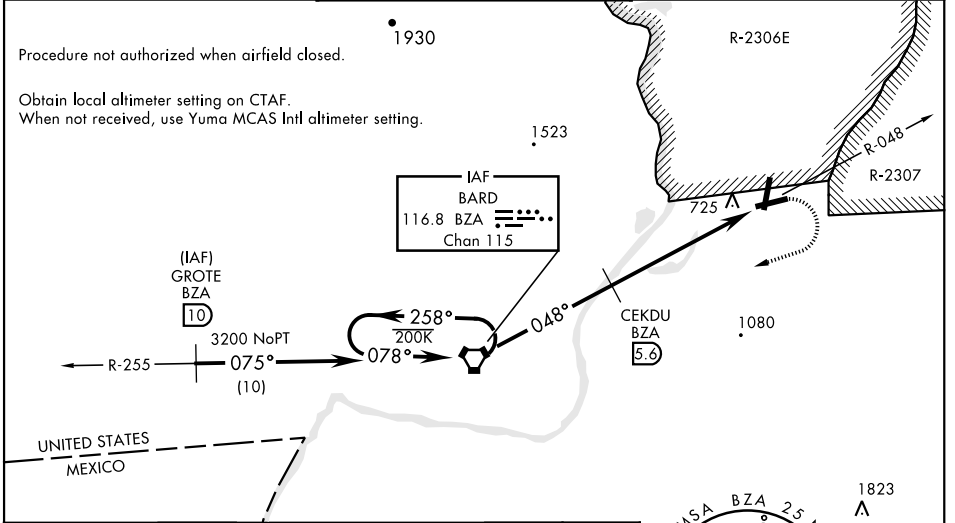
LAGUNA AAF (KLGf)

VORTAC BZA 116.8 Chan 115	APCH CRS 048°	Rwy Idg TDZE Arpt Elev 6000 387 433
---	-------------------------	---

AL-6341 [USA]

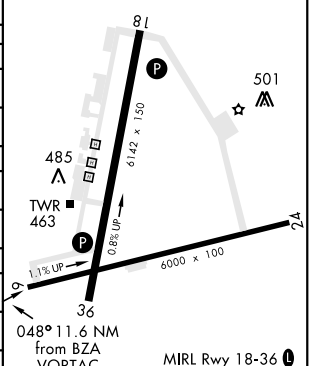
▼ *Straight-in minima not authorized at night.
▲ NA MISSED APPROACH: Climbing right turn to 3200 direct BZA VORTAC and hold.

YUMA APP CON 124.7 374.8	LAGUNA TOWER ★ 126.2 (CTAF) 242.175	GND CON 121.8 0 229.4
------------------------------------	---	---------------------------------



CATEGORY	A	B	C	D
S-6 *	1320-1¼ 933 (900-1¼)	1320-2¾ 933 (900-2¾)	1320-3 933 (900-3)	1320-3 933 (900-3)
CIRCLING	1320-1¼ 887 (900-1¼)	1320-2¾ 887 (900-2¾)	1320-3 887 (900-3)	1320-3 887 (900-3)
DME MINIMA				
S-6 *	1040-1 653 (700-1)	1040-1¾ 653 (700-1¾)	1040-2 653 (700-2)	1040-2 653 (700-2)
CIRCLING	1080-1 647 (700-1)	1080-1¾ 647 (700-1¾)	1080-2 647 (700-2)	1080-2 647 (700-2)
YUMA MCAS/YUMA Intl ALTIMETER SETTING				
S-6 *	1400-1¼ 1013 (1000-1¼)	1400-1½ 1013 (1000-1½)	1400-3 1013 (1000-3)	1400-3 1013 (1000-3)
CIRCLING	1400-1¼ 967 (1000-1¼)	1400-1½ 967 (1000-1½)	1400-3 967 (1000-3)	1400-3 967 (1000-3)
YUMA MCAS/YUMA Intl ALTIMETER SETTING DME MINIMA				
S-6 *	1120-1 733 (700-1)	1120-1¼ 733 (700-1¼)	1120-2¼ 733 (700-2¼)	1120-2½ 733 (700-2½)
CIRCLING	1160-1 727 (800-1)	1160-2 727 (800-2)	1160-2¼ 727 (800-2¼)	1160-2½ 727 (800-2½)

ELEV 433	TDZE 387
----------	----------



FAF to MAP 11.6 NM					
Knots	60	90	120	150	180
Min:Sec	11:36	7:44	5:48	4:38	3:52

YUMA PROVING GROUND, ARIZONA

32°52'N-114°24'W

LAGUNA AAF (KLGf)

Amdt 6A 20142

VOR RWY 6

SW-4, 07 OCT 2021 to 04 NOV 2021

SW-4, 07 OCT 2021 to 04 NOV 2021