

APP CRS <b>158°</b>	Rwy Idg <b>4499</b>
	TDZE <b>161</b>
	Apt Elev <b>161</b>

# RNAV (GPS) RWY 15

WILSON INDUSTRIAL AIR CENTER (W03)

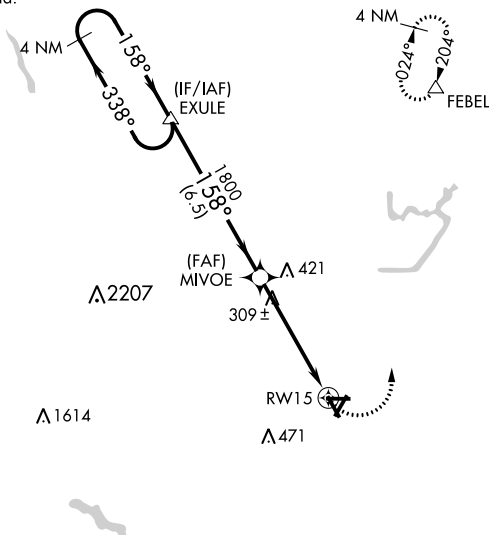
**NA** DME/DME RNP-0.3 NA. Procedure NA at night. Visibility reduction by helicopters NA. Obtain local altimeter setting on CTAF; when not received use Rocky Mount altimeter setting.

MISSED APPROACH: Climbing left turn to 2500 direct FEBEL and hold.

WASHINGTON CENTER  
**123.85 279.65**

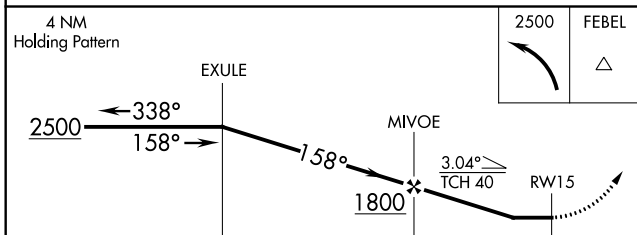
UNICOM  
**123.0 (CTAF) 0**

NoPT for arrival at EXULE on V194-310 eastbound.



SE-2, 07 OCT 2021 to 04 NOV 2021

SE-2, 07 OCT 2021 to 04 NOV 2021



ELEV	161	TDZE	161
------	-----	------	-----

REIL Rwy 3 and 21 0  
MIRL Rwy 3-21 0

CATEGORY	A	B	C	D
RNAV MDA	560-1 399 (400-1)			560-1¼ 399 (400-1¼)
CIRCLING	660-1	499 (500-1)	660-1½ 499 (500-1½)	720-2 559 (600-2)
ROCKY MOUNT ALTIMETER SETTING MINIMUMS				
RNAV MDA	580-1 419 (500-1)		580-1¼ 419 (500-1¼)	
CIRCLING	680-1	519 (600-1)	680-1½ 519 (600-1½)	720-2 559 (600-2)