

WAAS CH 69339 W03A	APP CRS 038°	Rwy Idg 4500 TDZE 156 Apt Elev 160
--	------------------------	---

RNAV (GPS) RWY 3

WILSON INDUSTRIAL AIR CENTER (W03)

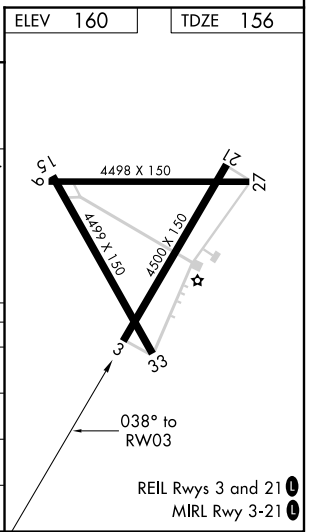
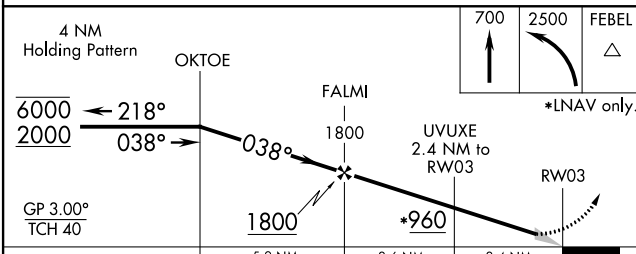
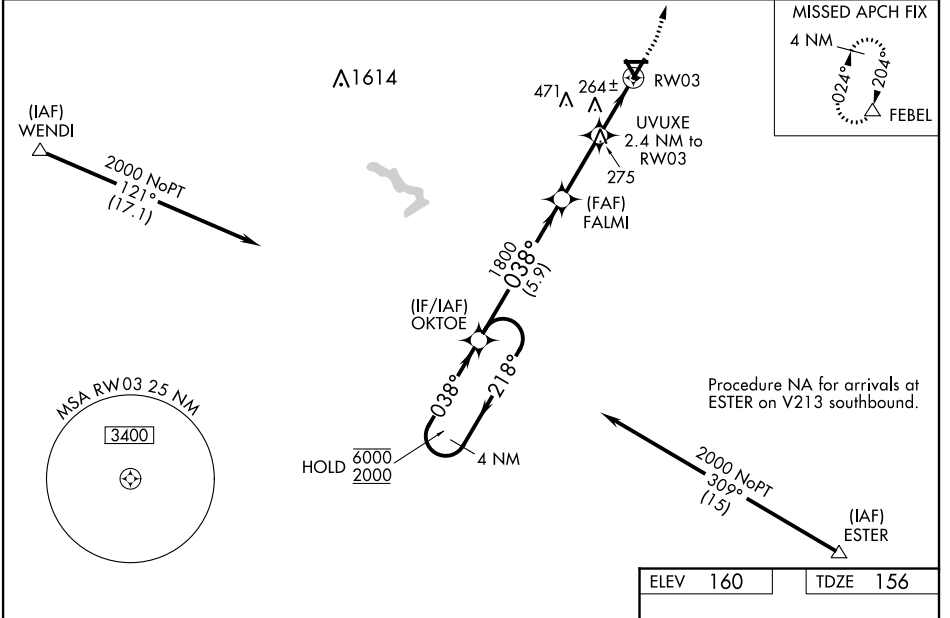
RNP APCH.

NA Baro-VNAV NA when using Rocky Mount altimeter setting. For uncompensated Baro-VNAV systems, LNAV/VNAV NA below -15°C or above 54°C. Obtain local altimeter setting on CTAF; when not received, use Rocky Mount altimeter setting: increase LPV DA to 421 and visibility all Cats 1/8 SM; increase LNAV/VNAV DA to 439; increase all MDA 20 feet and LNAV visibility Cats C and D 1/8 SM. Circling Rwy 9, 15, 27, 33 NA at night.

MISSED APPROACH: Climb to 700, then climbing left turn to 2500 direct FEBEL and hold.

WASHINGTON CENTER **123.85 279.65**

UNICOM **123.0 (CTAF) 0**



CATEGORY	A	B	C	D
LPV DA		406-3/4	250 (300-3/4)	
LNAV/VNAV DA		424-7/8	268 (300-7/8)	
LNAV MDA	520-1	364 (400-1)	520-1 3/4 364 (400-1 3/4)	520-2 364 (400-2)
C CIRCLING	660-1	500 (500-1)	780-1 3/4 620 (700-1 3/4)	780-2 620 (700-2)

SE-2, 07 OCT 2021 to 04 NOV 2021

SE-2, 07 OCT 2021 to 04 NOV 2021