

APP CRS
339°
Rwy Idg **4499**
TDZE **157**
Alt Elev **161**

RNAV (GPS) RWY 33
WILSON INDUSTRIAL AIR CENTER (W03)

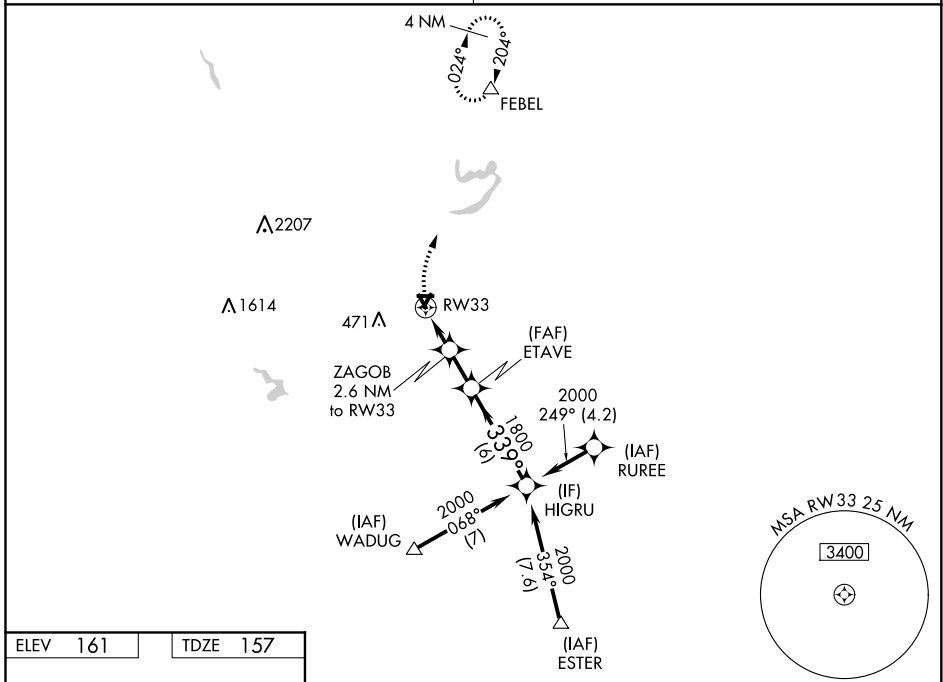
RNP APCH.

▼ Obtain local altimeter setting on CTAF; when not received, use Rocky Mount altimeter setting. Straight-in Rwy 33 NA at night, Circling Rwy 9, 15, 27, 33 NA at night. Rwy 33 helicopter visibility reduction below 1 SM NA.

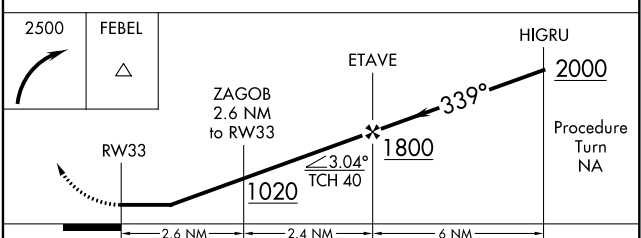
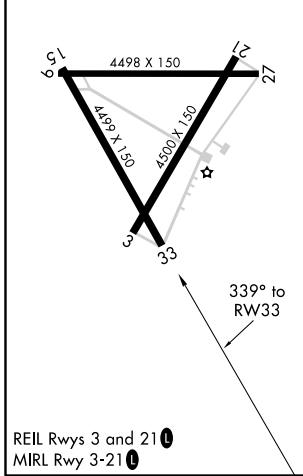
MISSED APPROACH: Climbing right turn to 2500 direct FEBEL WP and hold.

WASHINGTON CENTER
123.85 279.65

UNICOM
123.0 (CTAF) 0



ELEV 161	TDZE 157
----------	----------



CATEGORY	A	B	C	D
LNAV MDA	640-1	483 (500-1)	640-1¼ 483 (500-1¼)	640-1½ 483 (500-1½)
CIRCLING	660-1	499 (500-1)	660-1½ 499 (500-1½)	720-2 559 (600-2)
ROCKY MOUNT ALTIMETER SETTING MINIMUMS				
LNAV MDA	660-1	503 (500-1)	660-1½	503 (500-1½)
CIRCLING	680-1	519 (600-1)	680-1½ 519 (600-1½)	720-2 559 (600-2)

SE-2, 07 OCT 2021 to 04 NOV 2021

SE-2, 07 OCT 2021 to 04 NOV 2021