

APP CRS 024°	Rwy Idg 3302
	TDZE 1185
	Apt Elev 1188

RNAV (GPS) RWY 2

CALEDONIA COUNTY (CDA)

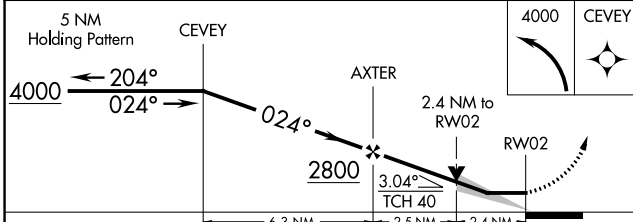
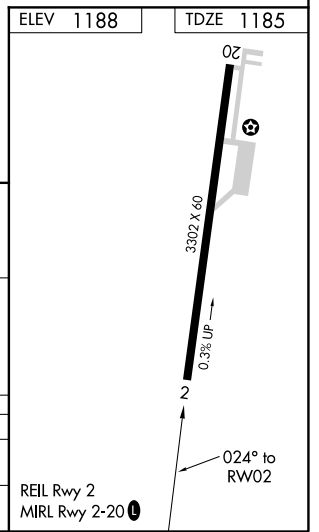
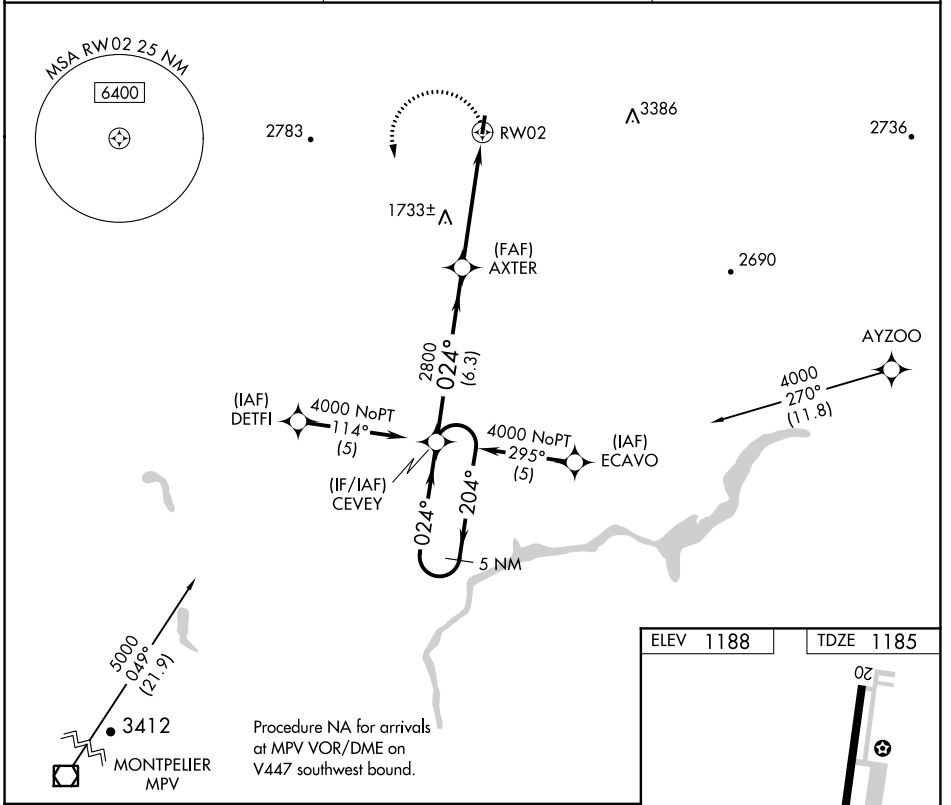
▽ DME/DME RNP-0.3 NA.
▲ When local altimeter setting not received, use Whitefield, NH altimeter setting and increase all MDA 80 feet, and increase LNAV and Circling Cat A visibility ¼ mile. Night landing: Rwy 20 NA.

MISSED APPROACH: Climbing left turn to 4000 direct CEVEY and hold.

AWOS-3
119.275

BOSTON CENTER
135.7 282.2

UNICOM
122.8 (CTAF) 0



CATEGORY	A	B	C	D
LNAV MDA	2000-1 815 (900-1)	2000-1 ¼ 815 (900-1 ¼)		NA
CIRCLING	2000-1 812 (900-1)	2000-1 ¼ 812 (900-1 ¼)		NA

NE-1, 07 OCT 2021 to 04 NOV 2021

NE-1, 07 OCT 2021 to 04 NOV 2021