

WAAS CH <b>90336</b> <b>W33A</b>	APP CRS <b>332°</b>	Rwy Idg TDZE Apt Elev	<b>4000</b> <b>190</b> <b>198</b>
--	------------------------	-----------------------------	---

# RNAV (GPS) RWY 33

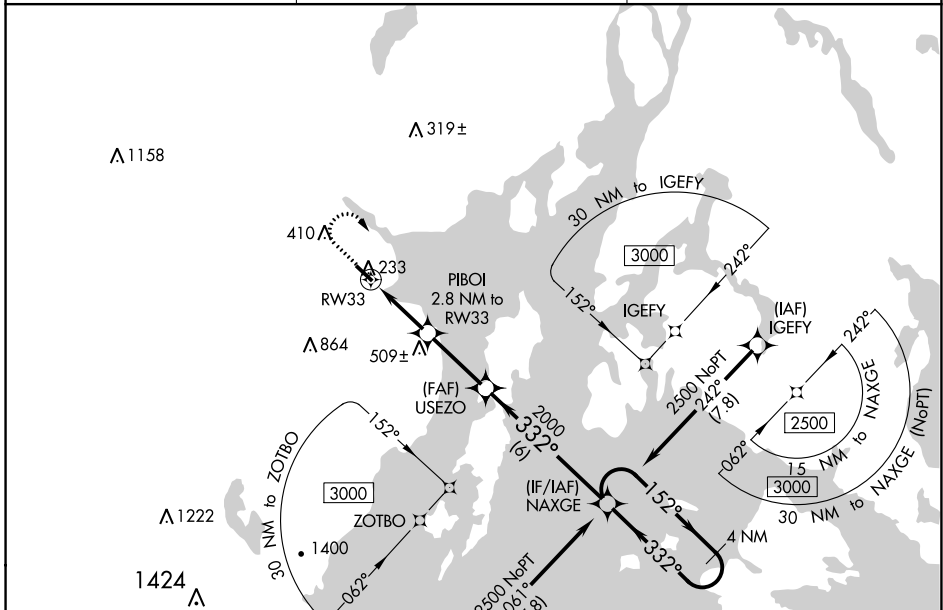
BELFAST MUNI (BST)

RNP APCH.

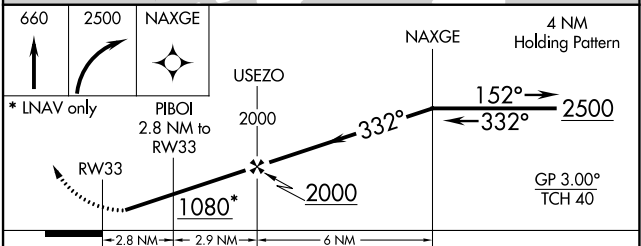
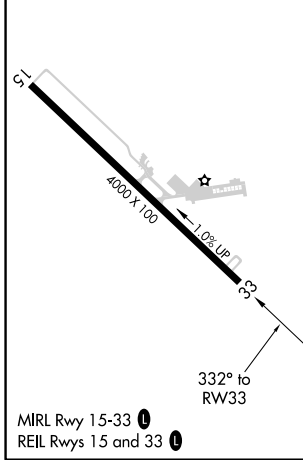
**⚠** Baro-VNAV NA when using Bangor Intl altimeter setting. For uncompensated Baro-VNAV systems, LNAV/VNAV NA below -20°C (-4°F) or above 54°C (130°F). Rwy 33 helicopter visibility reduction below ¼ SM NA. When local altimeter setting not received, use Bangor Intl altimeter setting and increase all DA/MDA 60 feet; increase LPV Cats A/B, LNAV/VNAV all Cats and Circling Cat C visibility ¼ SM, increase LPV and LNAV Cat C visibility ½ SM.

**⚠** MISSED APPROACH: Climb to 660 then climbing right turn to 2500 direct NAXGE and hold.

AWOS-AV <b>122.975</b>	BANGOR APP CON <b>118.925 239.3</b>	UNICOM <b>122.975 (CTAF) 0</b>
---------------------------	--	-----------------------------------



ELEV 198	TDZE 190
----------	----------



CATEGORY	A	B	C	D
LPV DA	440-1	250 (300-1)		NA
LNAV/VNAV DA	512-1¼	322 (400-1¼)		NA
LNAV MDA	580-1	390 (400-1)	580-1½ 390 (400-1½)	NA
<b>C</b> CIRCLING	700-1 502 (600-1)	800-1 602 (700-1)	1040-2½ 842 (900-2½)	NA

NE-1, 07 OCT 2021 to 04 NOV 2021

NE-1, 07 OCT 2021 to 04 NOV 2021