

VOR/DME EWO <b>110.8</b> Chan <b>45</b>	APP CRS <b>088°</b>	Rwy Idg <b>4876</b> TDZE <b>854</b> Apt Elev <b>871</b>
---	------------------------	---

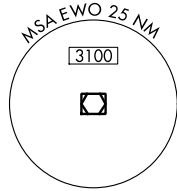
# VOR/DME RWY 11

LEBANON SPRINGFIELD-GEORGE HOERTER FLD (6I2)

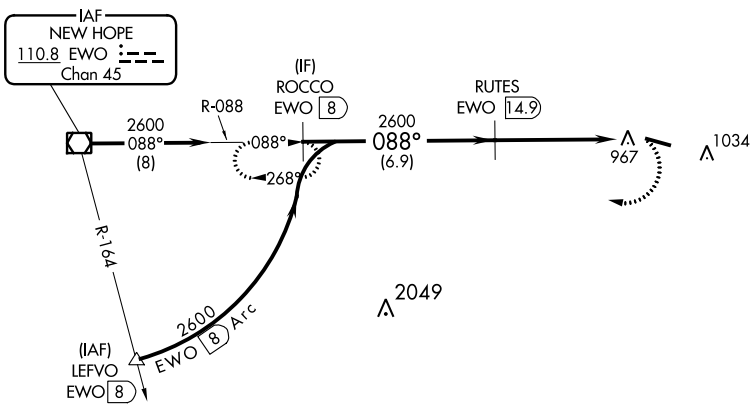
**NA** When local altimeter setting not received, use Danville altimeter setting and increase all MDA 80 feet and increase Cat C and D visibility ¼ mile. Helicopter visibility reduction below ¾ SM NA.

**MISSED APPROACH:** Climbing right turn to 4000 on EWO VOR/DME R-088 to ROCCO/EWO 8 DME and hold.

AWOS-3P <b>119.725</b>	INDIANAPOLIS CENTER <b>124.625 371.925</b>	UNICOM <b>122.8 (CTAF) 0</b>
---------------------------	---	---------------------------------



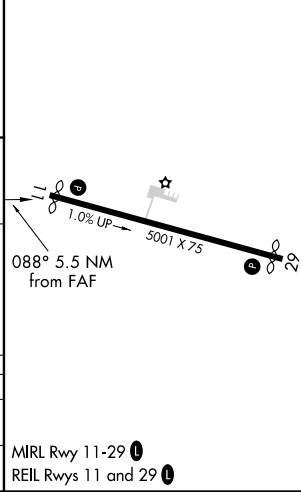
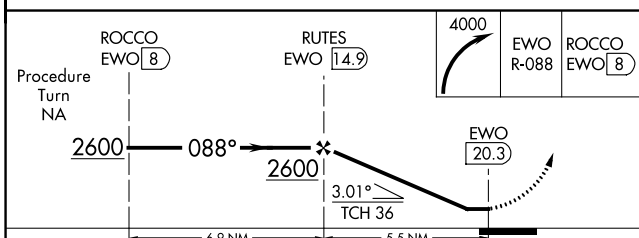
Procedure NA for arrivals at EWO VOR/DME on V178 westbound.



SE-1, 07 OCT 2021 to 04 NOV 2021

SE-1, 07 OCT 2021 to 04 NOV 2021

ELEV 871	TDZE 854
----------	----------



CATEGORY	A	B	C	D
S-11	1300-1	446 (500-1)	1300-1 3/8	446 (500-1 3/8)
<b>CIRCLING</b>	1460-1 589 (600-1)	1460-1 1/4 589 (600-1 1/4)	1460-1 1/2 589 (600-1 1/2)	1500-2 629 (700-2)