

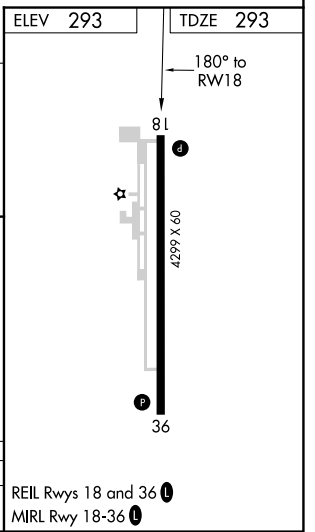
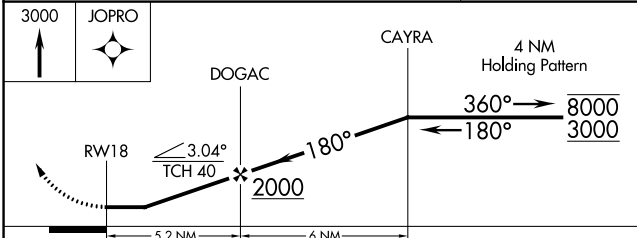
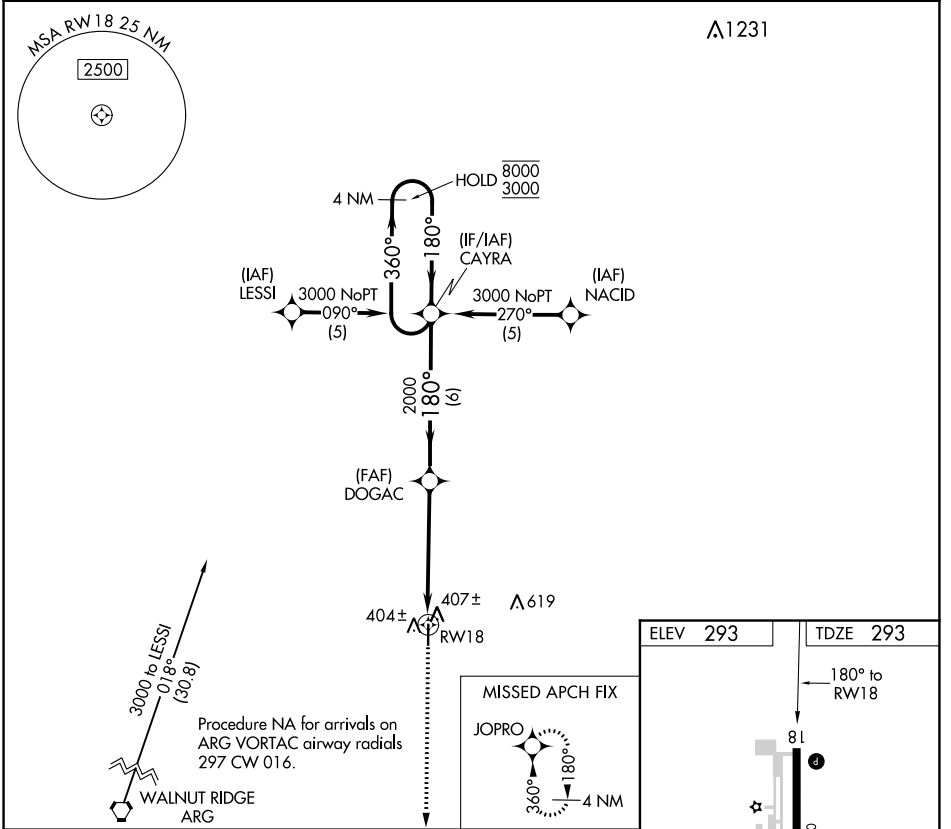
APP CRS 180°	Rwy ldg 4299
	TDZE 293
	Apt Elev 293

RNAV (GPS) RWY 18

CORNING MUNI (4M9)

RNP APCH-GPS.	MISSED APPROACH: Climb to 3000 direct JOPRO and hold.
Rwy 18 helicopter visibility reduction below 1 SM NA.	

AWOS-3 118.325	MEMPHIS CENTER 120.075 289.4	UNICOM 123.0 (CTAF) ①
--------------------------	--	---------------------------------



CATEGORY	A	B	C	D
LNAV MDA	720-1	427 (500-1)	720-1¼ 427 (500-1¼)	NA

SC-1, 07 OCT 2021 to 04 NOV 2021

SC-1, 07 OCT 2021 to 04 NOV 2021