

WAAS CH <b>42931</b> <b>W17A</b>	APP CRS <b>174°</b>	Rwy Idg TDZE <b>229</b> Apt Elev <b>229</b>	<b>5003</b>
--	------------------------	---	-------------

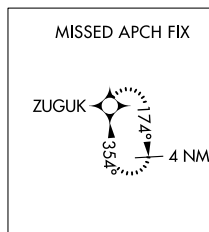
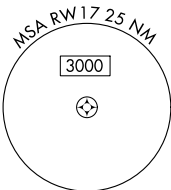
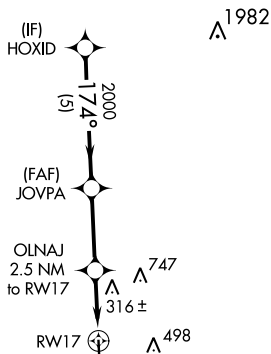
# RNAV (GPS) RWY 17

NAVASOTA MUNI (60R)

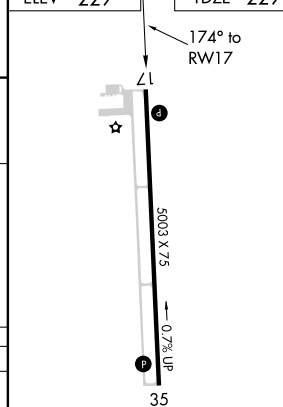
RNP APCH.	<p>▼ Use Brenham altimeter setting; when not received, use College Station altimeter setting and increase all DA 6 feet and all MDA 20 feet.                  ▲ NA Baro-VNAV NA. Rwy 17 helicopter visibility reduction below 3/4 SM NA.</p>	MISSED APPROACH: Climb to 3000 direct ZUGUK and hold.
-----------	--	---

11R AWOS-3 <b>121.125</b>	HOUSTON APP CON <b>134.3 360.85</b>	CTAF <b>122.9</b>	<b>123.3 0</b>
------------------------------	--	----------------------	----------------

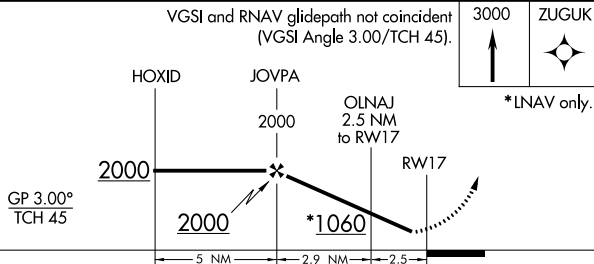
## RADAR REQUIRED



ELEV	229	TDZE	229
------	-----	------	-----



VGSI and RNAV glidepath not coincident (VGSI Angle 3.00/TCH 45).



CATEGORY	A	B	C	D
LPV DA	529-1 300 (300-1)			
LNAV/VNAV DA	635-1 3/8 406 (500-1 3/8)			
LNAV MDA	620-1 391 (400-1)		620-1 1/8 391 (400-1 1/8)	

REIL Rwy 17 and 35  
MIRL Rwy 17-35 0

SC-5, 07 OCT 2021 to 04 NOV 2021

SC-5, 07 OCT 2021 to 04 NOV 2021