

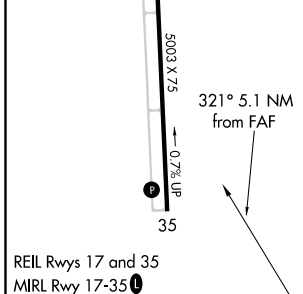
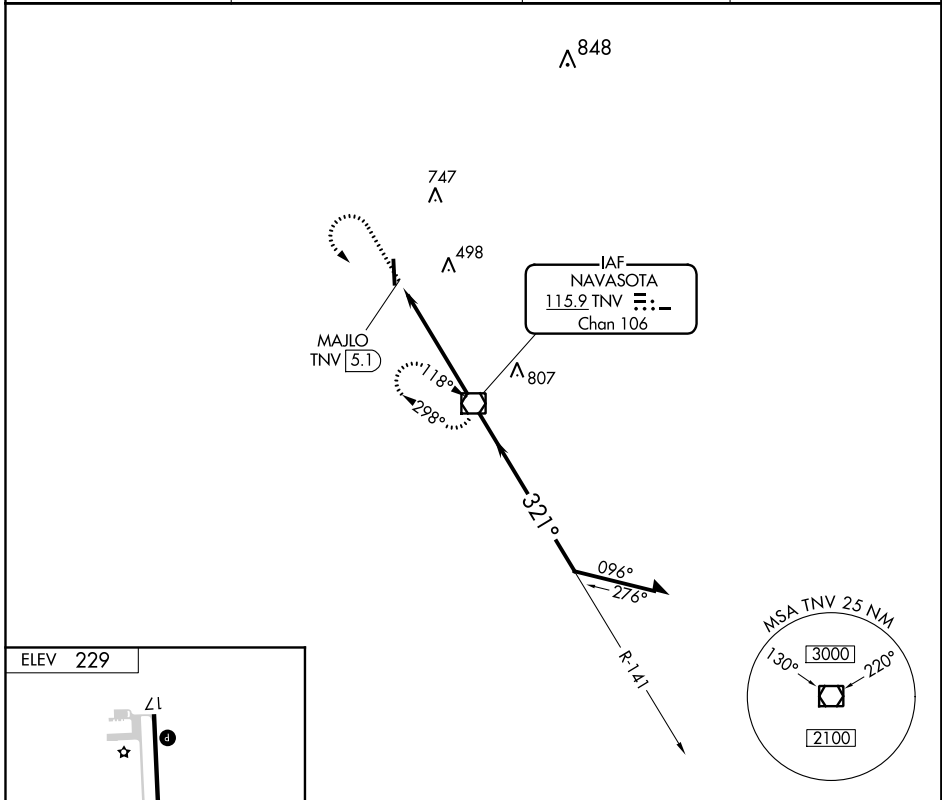
VOR/DME TNV <b>115.9</b> Chan <b>106</b>	APP CRS <b>321°</b>	Rwy Idg TDZE Apt Elev	<b>N/A</b> <b>N/A</b> <b>229</b>
--	------------------------	-----------------------------	--

**VOR-A**  
NAVASOTA MUNI (60R)

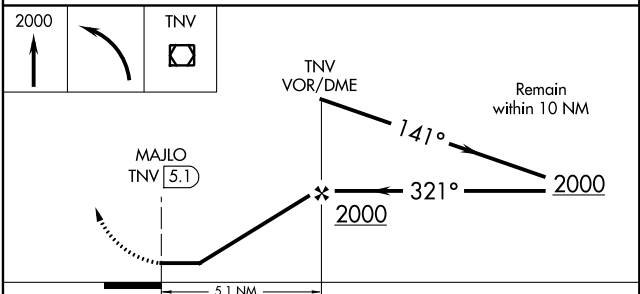
**▼** Use Brenham altimeter setting; when not received, use College Station altimeter setting and increase all MDA 20 feet and increase Cat C visibility ¼ mile.

**▲ NA** MISSED APPROACH: Climb to 2000 then left turn direct TNV VOR/DME and hold.

11R AWOS-3 <b>121.125</b>	HOUSTON APP CON <b>134.3 360.85</b>	CTAF <b>122.9</b>	<b>123.3 0</b>
------------------------------	--	----------------------	----------------



FAF to MAP 5.1 NM					
Knots	60	90	120	150	180
Min:Sec	5:06	3:24	2:33	2:02	1:42



CATEGORY	A	B	C	D
CIRCLING	820-1	591 (600-1)	820-1½ 591 (600-1½)	980-2½ 751 (800-2½)

SC-5, 07 OCT 2021 to 04 NOV 2021

SC-5, 07 OCT 2021 to 04 NOV 2021