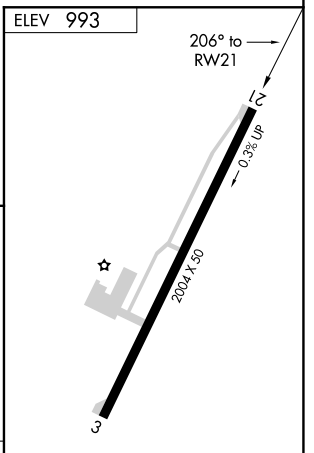
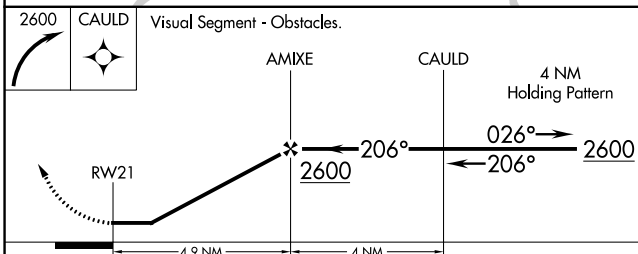
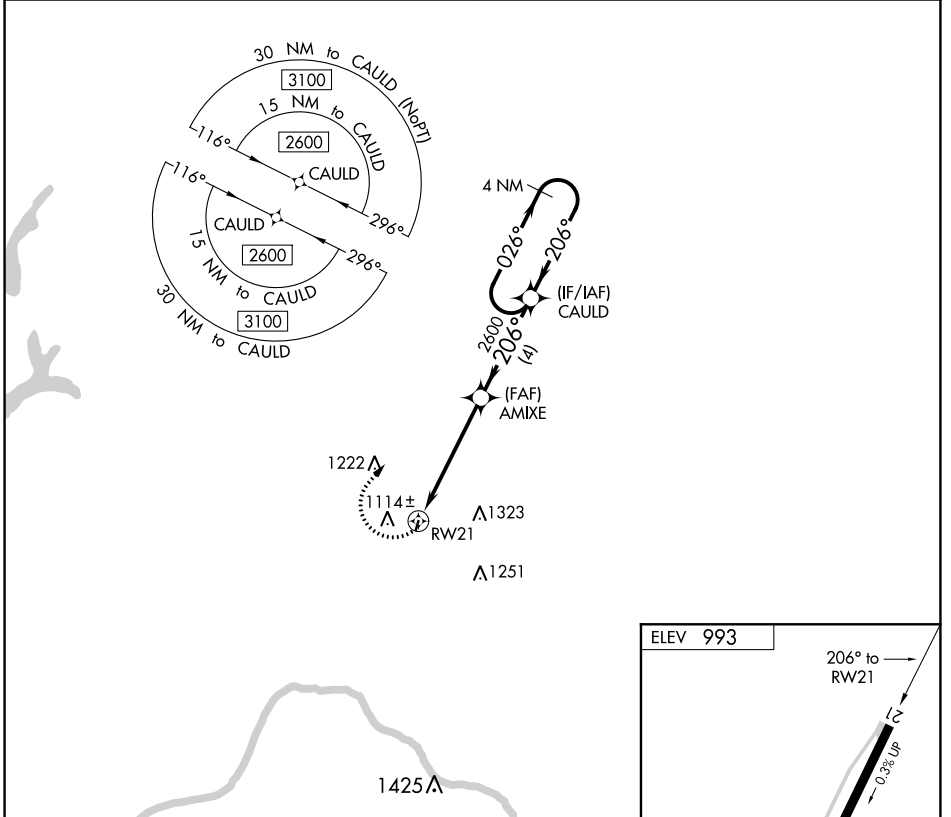


APP CRS 206°	Rwy Idg TDZE Apt Elev	N/A N/A 993
------------------------	-----------------------------	--

RNAV (GPS)-B

EXCELSIOR SPRINGS MEML (3)EX

<p>▼ Use Charles B Wheeler Downtown altimeter setting. ▲ NA DME/DME RNP-0.3 NA. Procedure NA at night. Helicopter visibility reduction below 1 SM NA.</p>	<p>MISSED APPROACH: Climbing right turn to 2600 direct CAULD and hold.</p>
<p>KANSAS CITY APP CON 118.4 307.35</p>	<p>UNICOM 122.7 (CTAF)</p>



CATEGORY	A	B	C	D
C CIRCLING	1660-1 667 (700-1)		NA	

IURL Rwy 3-21

NC-3, 07 OCT 2021 to 04 NOV 2021

NC-3, 07 OCT 2021 to 04 NOV 2021