

APP CRS 254°	Rwy Idg TDZE Apt Elev	N/A N/A 1478
------------------------	-----------------------------	---

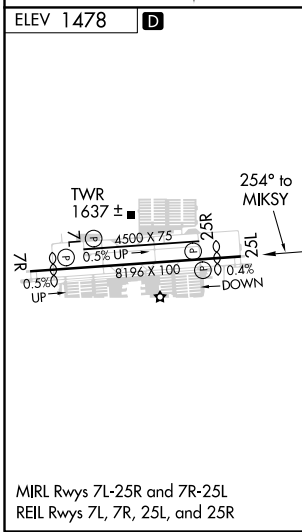
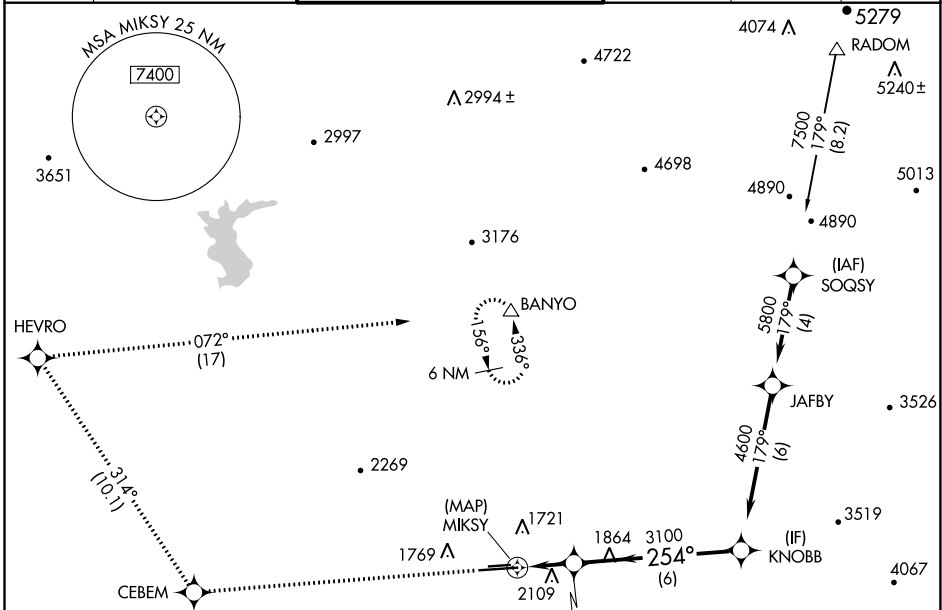
RNAV (GPS)-B

PHOENIX DEER VALLEY (DVT)

⚠ DME/DME RNP-0.3 NA. When VGSI inoperative, Circling to Rwy 25R NA at night. Circling not authorized at night north of Rwy 7R-25L. If local altimeter setting not received, use Phoenix Sky Harbor Intl altimeter setting and increase all MDAs 100 feet.

MISSED APPROACH: Climb to 6000 direct CEBEM and via 314° track to HEVRO, and right turn via 072° track to BANYO and hold.

ATIS 126.5	PHOENIX APP CON 120.7 239.0	DEER VALLEY TOWER ★ 118.4 (070°-250°) (CTAF) 120.2 (251°-069°)	GND CON 121.8	CLNC DEL 123.9	UNICOM 122.95
----------------------	---------------------------------------	--	-------------------------	--------------------------	-------------------------



6000	CEBEM	314° tr	HEVRO	BANYO	4600
JERGI					Procedure Turn NA
MIKSY	TCH 40		3100		
2 NM		6 NM			
CATEGORY	A	B	C	D	
CIRCLING	2400-1¼ 922 (1000-1¼)	2420-1¼ 942 (1000-1¼)	2420-2¾ 942 (1000-2¾)	NA	

SW-4, 07 OCT 2021 to 04 NOV 2021

SW-4, 07 OCT 2021 to 04 NOV 2021