

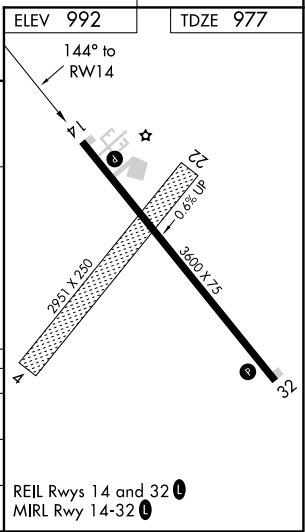
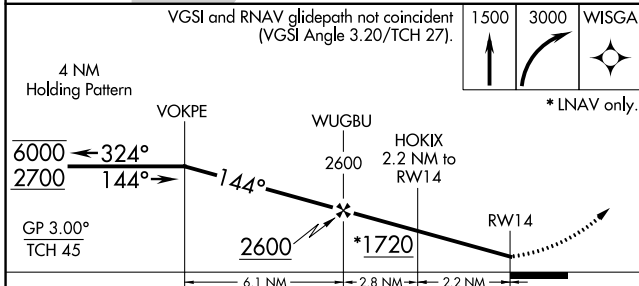
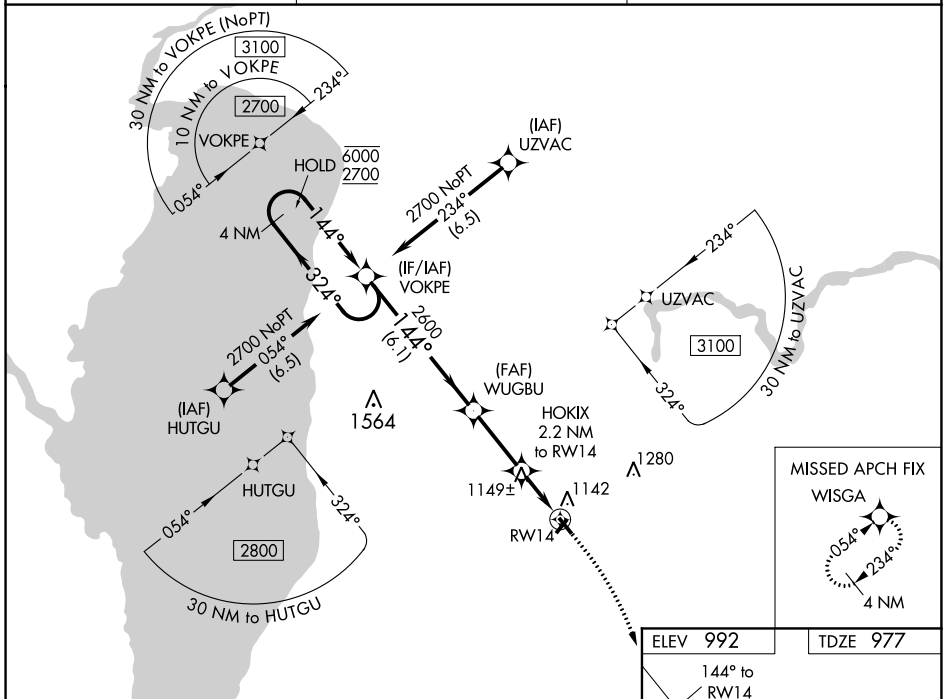
WAAS CH <b>99625</b> <b>W14A</b>	APP CRS <b>144°</b>	Rwy Idg TDZE <b>977</b> Apt Elev <b>992</b>	<b>3600</b>
--	------------------------	---	-------------

# RNAV (GPS) RWY 14

NEW HOLSTEIN MUNI (8D1)

RNP APCH.	MISSED APPROACH: Climb to 1500 then climbing right turn to 3000 direct WISGA and hold.
<p>▼ Rwy 14 helicopter visibility reduction below 3/4 SM NA. Baro-VNAV NA.</p> <p>▲ NA Use Oshkosh altimeter setting, when not received use Appleton altimeter setting.</p>	

OSH ASOS <b>125.9</b>	MILWAUKEE APP CON <b>127.0 263.075</b>	UNICOM <b>123.0 (CTAF) 0</b>
--------------------------	---	---------------------------------



CATEGORY	A	B	C	D
LPV DA	1358-1 1/8	381 (400-1 1/8)		NA
LNAV/VNAV DA	1390-1 1/4	413 (400-1 1/4)		NA
LNAV MDA	1480-1	503 (500-1)		NA

EC-3, 07 OCT 2021 to 04 NOV 2021

EC-3, 07 OCT 2021 to 04 NOV 2021