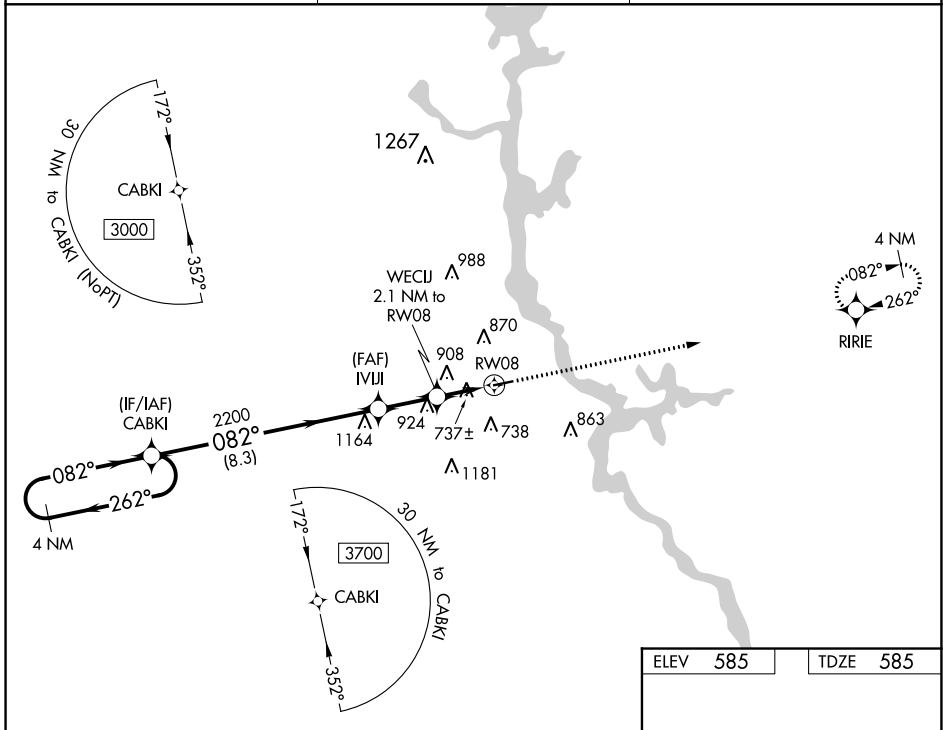


WAAS CH <b>86739</b> <b>W08A</b>	APP CRS <b>082°</b>	Rwy Idg TDZE Apt Elev	<b>4007</b> <b>585</b> <b>585</b>
--	------------------------	-----------------------------	---

# RNAV (GPS) RWY 8

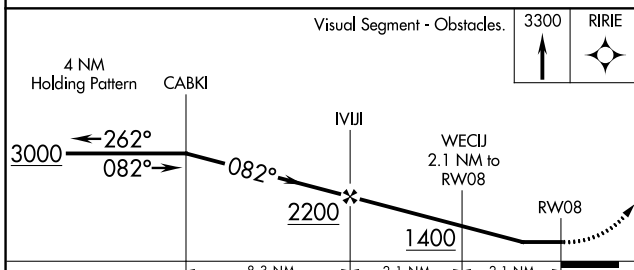
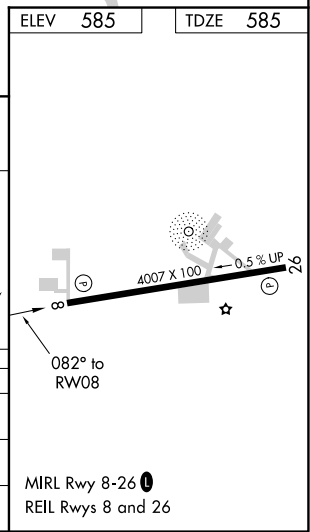
CHILTON COUNTY (02A)

<p><b>▽</b> NA <b>▲</b> NA</p> <p>DME/DME RNP-0.3 NA. Helicopter visibility reduction below 1 SM NA. Use Shelby County altimeter setting; when not received, use Merkel Field Sylacauga Muni altimeter setting and increase all MDA 20 feet and LNAV visibility Cat C/D ½ mile. Procedure NA at night.</p>	MISSED APPROACH: Climb to 3300 direct RIRIE and hold.	
EET ASOS-3 <b>134.325</b>	MONTGOMERY APP CON ★ <b>121.2 269.05</b>	UNICOM <b>122.8 (CTAF) 0</b>



SE-4, 07 OCT 2021 to 04 NOV 2021

SE-4, 07 OCT 2021 to 04 NOV 2021



CATEGORY	A	B	C	D
LP MDA	1040-1	455 (500-1)	1040-1 <sup>3</sup> / <sub>8</sub>	455 (500-1 <sup>1</sup> / <sub>2</sub> )
LNAV MDA	1220-1	635 (700-1)	1220-1 <sup>3</sup> / <sub>4</sub>	635 (700-1 <sup>3</sup> / <sub>4</sub> )
<b>C</b> CIRCLING	1260-1	675 (700-1)	1280-2 695 (700-2)	1600-3 1015 (1100-3)