

VORTAC FOD 113.5 Chan 82	APP CRS 063°	Rwy Idg TDZE Apt Elev 1132	N/A N/A 1132
--	------------------------	---	---

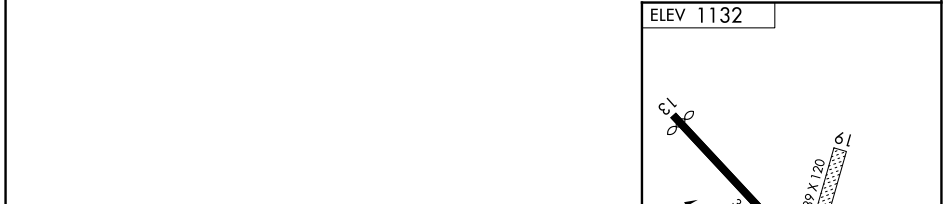
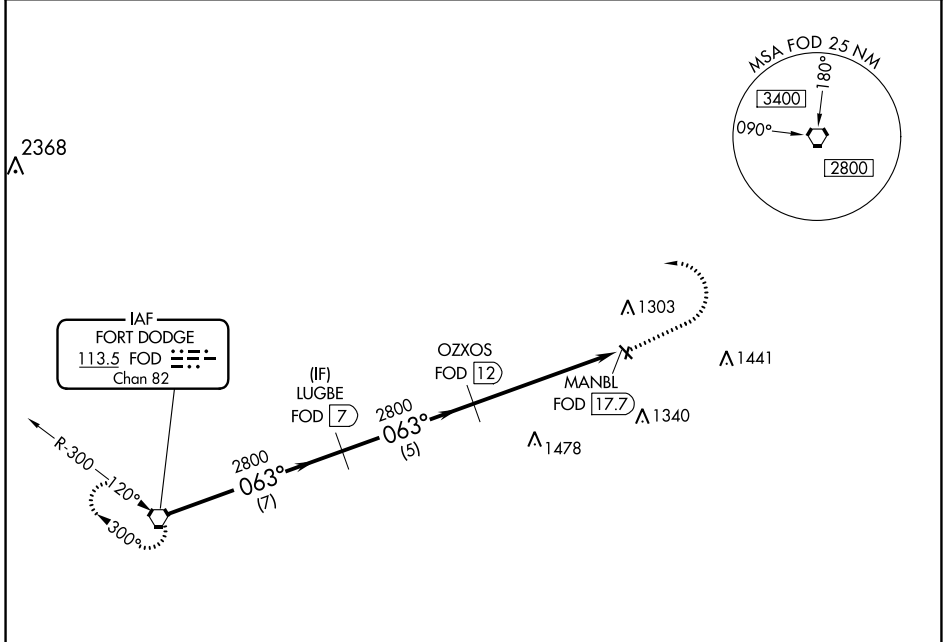
VOR/DME-A

EAGLE GROVE MUNI (EAG)

⚠ NA Use Clarion altimeter setting; when not received, use Fort Dodge altimeter setting. Night Landing: Rwy 13 NA. Circling NA to Rwys 1 and 19. Helicopter visibility reduction below 1 SM NA.

MISSED APPROACH: Climb to 2800 then left turn via FOD R-063 to FOD VORTAC and hold.

CAV AWOS-3 126.575	MINNEAPOLIS CENTER 134.0 288.3	UNICOM 122.8 (CTAF) 0
------------------------------	--	--



Procedure Turn NA	FOD VORTAC	LUGBE FOD (7)	OZSOS FOD (12)	2800	FOD
2800	063°	2800	2800	FOD R-063	2800
	7 NM	5 NM	5.7 NM	MANBL FOD (17.7)	

CATEGORY	A	B	C	D
C CIRCLING	1660-1	528 (600-1)	NA	

MIRL Rwy 13-31 **0**

REIL Rwys 13 and 31 **0**

NC-3, 07 OCT 2021 to 04 NOV 2021

NC-3, 07 OCT 2021 to 04 NOV 2021