

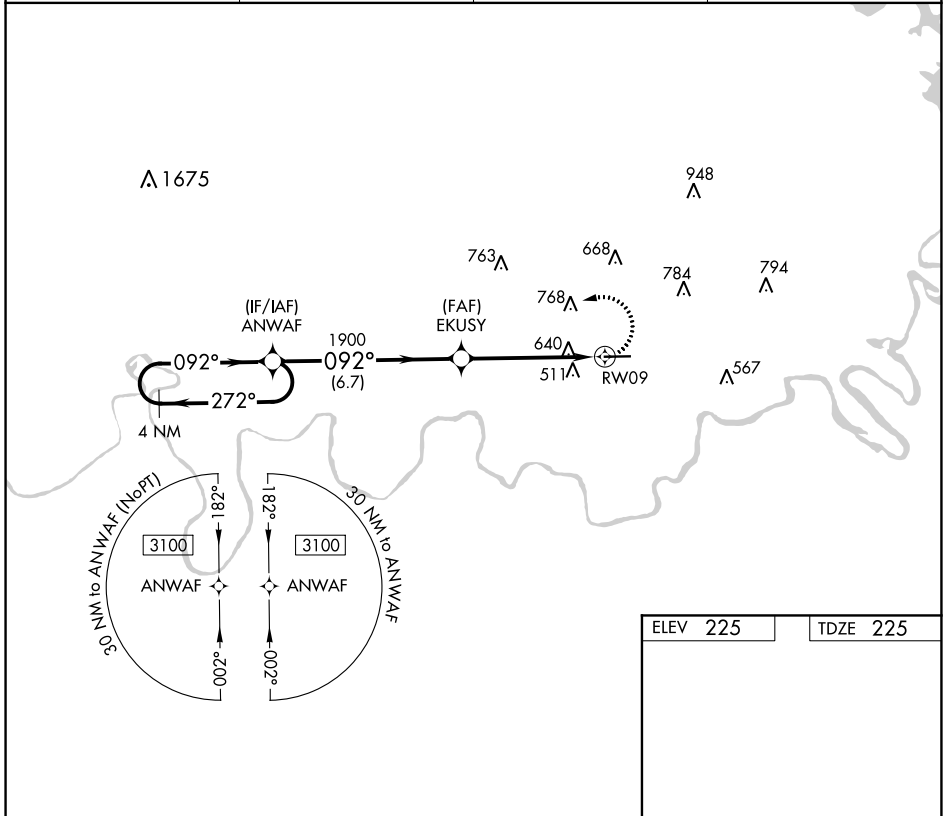
APP CRS <b>092°</b>	Rwy ldg TDZE Apt Elev	<b>5400</b> <b>225</b> <b>225</b>
------------------------	-----------------------------	---

# RNAV (GPS) RWY 9

PRATTVILLE-GROUBY FIELD (1A9)

RNP APCH.	<p><b>⚠</b> Rwy 9 helicopter visibility reduction below 1 SM NA. When local altimeter setting not received, use Montgomery Rgnl (Dannelly Fld) altimeter setting and increase all MDA 40 feet; increase LNAV Cats C/D visibility ½ SM. Straight-in Rwy 9 NA at night.</p>	<p>MISSED APPROACH: Climbing left turn to 3100 direct ANWAF and hold.</p>
-----------	---	---

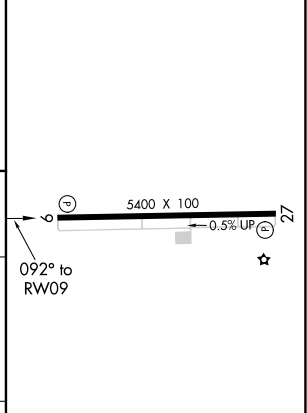
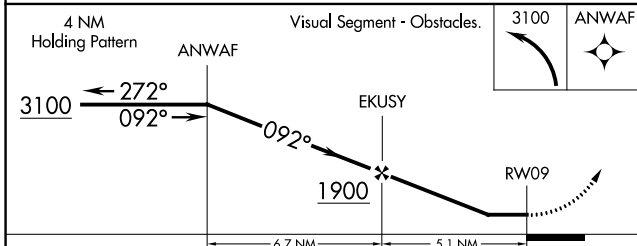
AWOS-3P <b>118.025</b>	MONTGOMERY APP CON ★ <b>121.2 269.05</b>	GCO <b>121.725</b>	UNICOM <b>122.8 (CTAF) 0</b>
---------------------------	---	-----------------------	---------------------------------



SE-4, 07 OCT 2021 to 04 NOV 2021

SE-4, 07 OCT 2021 to 04 NOV 2021

ELEV 225	TDZE 225
----------	----------



CATEGORY	A	B	C	D
LNAV MDA	980-1 755 (800-1)	980-1¼ 755 (800-1¼)	980-2	755 (800-2)

MIRL Rwy 9-27 0  
REIL Rws 9 and 27 0