

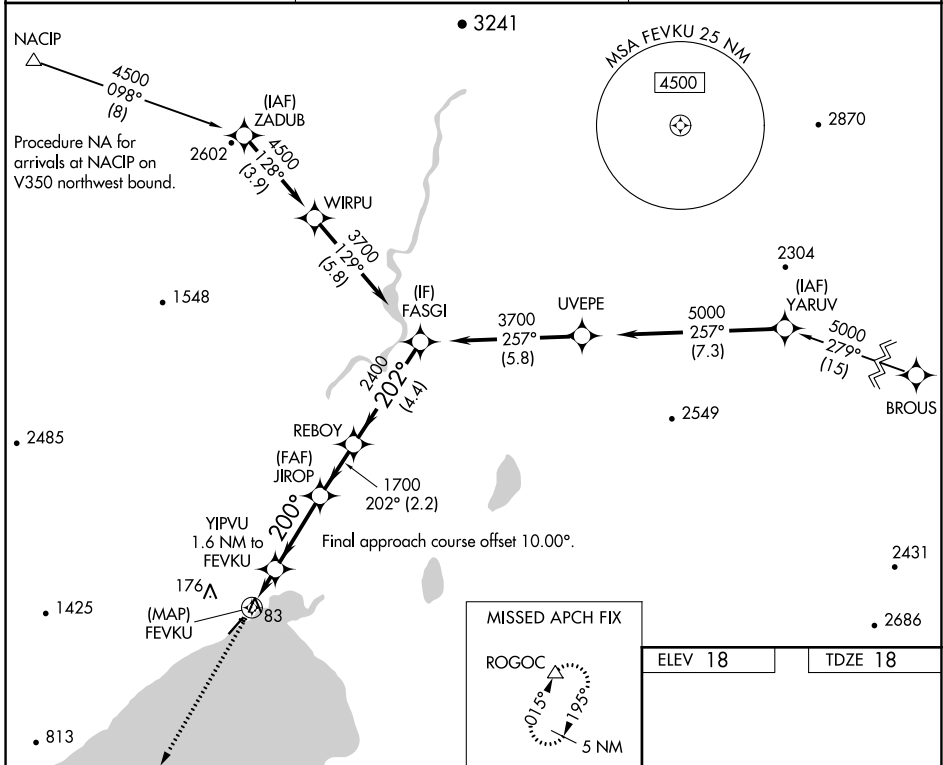
WAAS CH <b>72841</b> <b>W21A</b>	APP CRS <b>200°</b>	Rwy Idg TDZE Apt Elev	<b>4400</b> <b>18</b> <b>18</b>
--	------------------------	-----------------------------	---------------------------------------

# RNAV (GPS) RWY 21

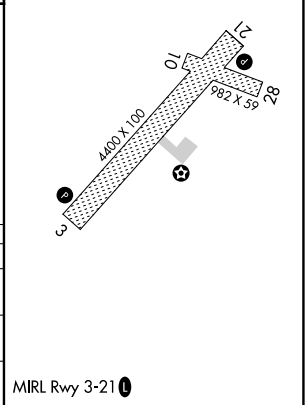
TOGIAK (TOG)(PATG)

<p><b>⚠</b> Circling NA northwest of Rwy 3-21.  <b>⚠</b> Rwy 21 helicopter visibility reduction below 1 SM NA.                  DME/DME RNP-0.3 NA. Procedure NA at night.</p>	<p>MISSED APPROACH: Climb to 4400                  direct ROGOC and hold, continue                  climb-in-hold to 4400.</p>
--	--

AWOS-3P <b>119.3</b>	ANCHORAGE CENTER <b>132.75 282.35</b>	CTAF <b>122.5</b>
-------------------------	--	----------------------



4400 ↑ ROGOC △	VGSIs and descent angles not coincident (VGSi Angle 3.00/TCH 31).			
	FEVKU	YIPVU 1.6 NM to FEVKU	JIROF	REBOY
	720	200°	1700	2400
	3.00° TCH 40	200°	1700	2400
	3700	202°	3700	FASGI
	0.5	1.6 NM	3.1 NM	2.2 NM
CATEGORY	A	B	C	D
LP MDA		340-1	322 (400-1)	
LNAV MDA		340-1	322 (400-1)	
<b>C</b> CIRCLING	400-1 382 (400-1)	480-1 462 (500-1)	480-1½ 462 (500-1½)	800-2½ 782 (800-2½)



AK, 07 OCT 2021 to 02 DEC 2021

AK, 07 OCT 2021 to 02 DEC 2021