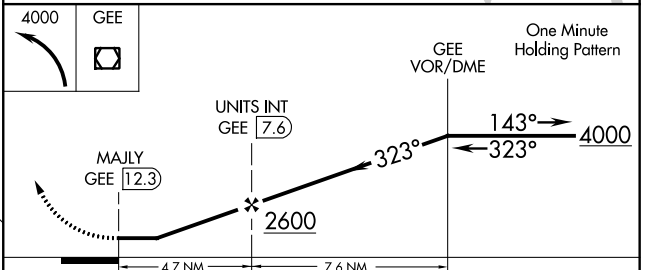
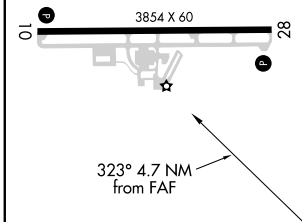
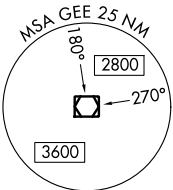
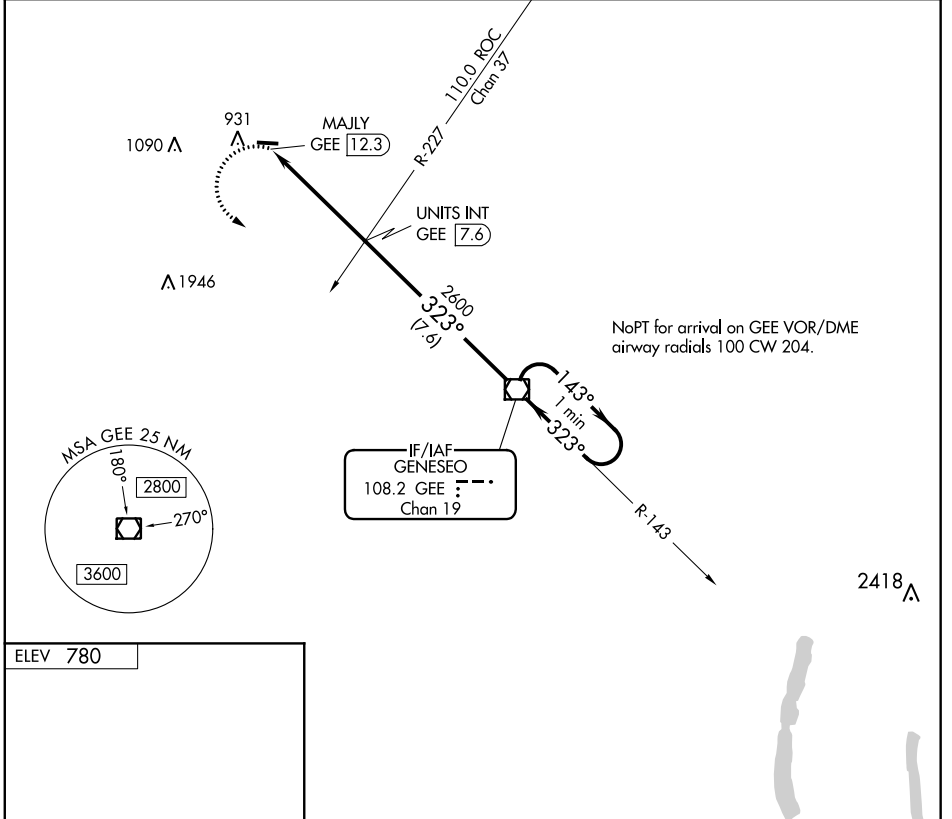


VOR/DME GEE 108.2 Chan 19	APP CRS 323°	Rwy Idg TDZE Apt Elev	N/A N/A 780
---	------------------------	-----------------------------	--

VOR-A
LE ROY (5G \emptyset)

⚠ NA	Use Greater Rochester altimeter setting. Circling Rwy 10 NA at night. When Circling to Rwy 28 at night, operational VGSI required, remain on or above VGSI glidepath until threshold.	MISSED APPROACH: Climbing left turn to 4000 direct GEE VOR/DME and hold.
-------------	---	--

ROC ASOS 124.825	ROCHESTER APP CON 123.7 322.3	UNICOM 122.8 (CTAF) ①
----------------------------	---	--



FAF to MAP 4.7 NM					CATEGORY	A	B	C	D	
Knots	60	90	120	150	180	CIRCLING		1440-1	660 (700-1)	NA
Min:Sec	4:42	3:08	2:21	1:53	1:34					

NE-2, 07 OCT 2021 to 04 NOV 2021

NE-2, 07 OCT 2021 to 04 NOV 2021