

COLUMBUS, OHIO

AL-6846 (FAA)

21252

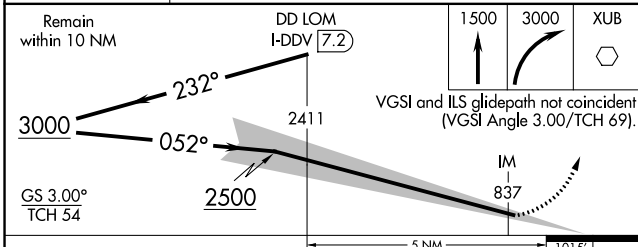
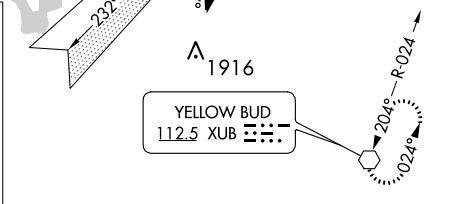
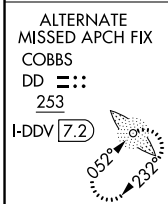
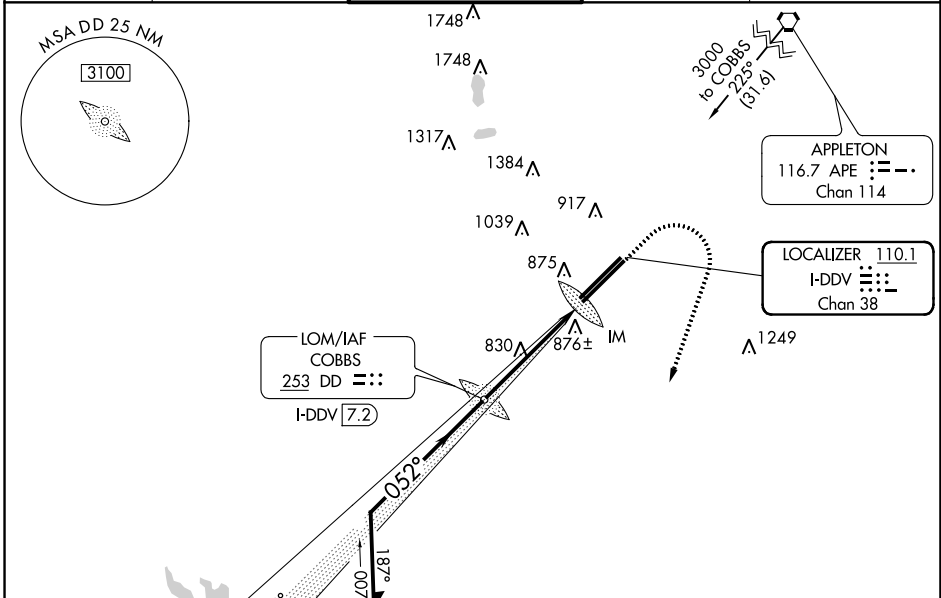
LOC/DME I-DDV <b>110.1</b> Chan <b>38</b>	APP CRS <b>052°</b>	Rwy Idg <b>12102</b> TDZE <b>736</b> Apt Elev <b>744</b>
---	------------------------	--

# ILS RWY 5R (CAT II)

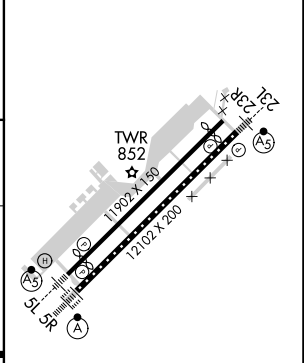
RICKENBACKER INTL (LCK)

ADF or DME required.		ALSIF-2 	MISSED APPROACH: Climb to 1500 then climbing right turn to 3000 direct XUB VOR and hold.	
----------------------	--	-------------	--	--

ATIS <b>132.75</b>	COLUMBUS APP CON <b>134.0 279.6</b>	RICK TOWER <b>120.05 348.4</b>	GND CON <b>125.275 275.8</b>	CLNC DEL <b>125.275 275.8</b>
-----------------------	--	-----------------------------------	---------------------------------	----------------------------------



ELEV 744	D	TDZE 736
----------	---	----------



CATEGORY	A	B	C	D
S-ILS 5R	RA 100/12 100 DA 836			

**CATEGORY II ILS - SPECIAL AIRCREW & AIRCRAFT CERTIFICATION REQUIRED**

TDZ/CL Rwy 5R  
REIL Rwy 23R  
HIRL Rwys 5L-23R and 5R-23L

EC-2, 07 OCT 2021 to 04 NOV 2021

EC-2, 07 OCT 2021 to 04 NOV 2021

COLUMBUS, OHIO  
Amdt 3E 09SEP21

39°49'N-82°56'W

RICKENBACKER INTL (LCK)  
ILS RWY 5R (CAT II)