

|                           |                        |  |
|---------------------------|------------------------|--|
| LOC I-LCK<br><b>110.1</b> | APP CRS<br><b>232°</b> | Rwy Idg<br>23L <b>12102</b> 23R <b>10913</b> |
|                           |                        | TDZE<br><b>740</b> <b>743</b>                |
|                           |                        | Apt Elev<br><b>744</b> <b>744</b>            |

# ILS or LOC RWY 23L

RICKENBACKER INTL (LCK)

**⚠** Circling NA northwest of Rwy 5L-23R. When local altimeter setting not received, use John Glenn Columbus Intl altimeter setting: increase DA to 975 feet; increase all MDAs 40 feet and S-LOC 23L visibility Cats C/D to RVR 5500 and Circling visibility Cat D to 2 1/4 SM. Autopilot coupled approach NA below 1000 MSL.



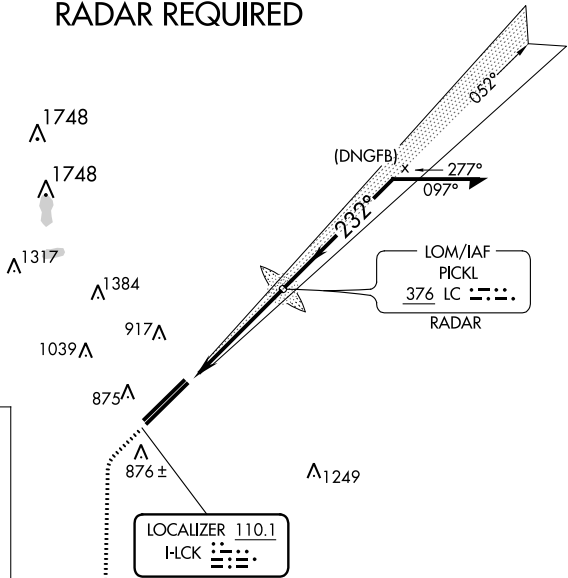
MISSED APPROACH: Climb to 3000, then left turn direct XUB VOR and hold.

|                       |  |                                   |                                 |                                  |
|-----------------------|--|-----------------------------------|---------------------------------|----------------------------------|
| ATIS<br><b>132.75</b> | COLUMBUS APP CON<br><b>134.0 279.6</b> | RICK TOWER<br><b>120.05 348.4</b> | GND CON<br><b>125.275 275.8</b> | CLNC DEL<br><b>125.275 275.8</b> |
|-----------------------|--|-----------------------------------|---------------------------------|----------------------------------|

ALTERNATE MISSED APCH FIX

PICKL  
376 LC

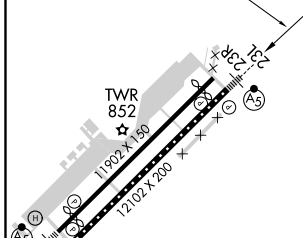
## RADAR REQUIRED



MISSED APCH FIX

YELLOW BUD  
XUB 112.5

|          |                      |              |
|----------|----------------------|--------------|
| ELEV 744 | TDZE 23L 740         | TDZE 23R 743 |
|          | 232° 4.9 NM from FAF |              |



3000

XUB

LC LOM RADAR

Remain within 10 NM

052°

2900

232°

2400

GS 3.00° TCH 62

4.9 NM

VGSI and ILS glidepath not coincident (VGSI Angle 3.00/TCH 78).

|                  |                             |                   |   |
|------------------|-----------------------------|-------------------|---|
| TDZ/CL Rwy 5R    | TDZ/CL Rwy 23R              | TDZ/CL Rwy 23L    | TDZ/CL Rwy 5L                             |
| REIL Rwy 23R     | HIRL Rwys 5L-23R and 5R-23L | FAF to MAP 4.9 NM |   |
| Knots            | 60                          | 90                | 120                                       |
| Min:Sec          | 4:54                        | 3:16              | 2:27                                      |
|                  | 1:58                        | 1:38              |   |
| CATEGORY         | A                           | B                 | C   |
| S-ILS 23L        | 940/24 200 (200-1/2)        |                   |   |
| S-LOC 23L        | 1220/24                     | 480 (500-1/2)     | 1220/50 480 (500-1)                       |
| SIDESTEP RWY 23R | 1220-1                      | 477 (500-1)       | 1220-1/2 477 (500-2)                      |
| CIRCLING         | 1240-1                      | 496 (500-1)       | 1280-1/2 1400-2 536 (600-1/2) 656 (700-2) |

EC-2, 07 OCT 2021 to 04 NOV 2021

EC-2, 07 OCT 2021 to 04 NOV 2021