

WAAS CH 78421 W23B	APP CRS 230°	Rwy Idg TDZE Apt Elev	10913 743 744
--	------------------------	-----------------------------	--

RNAV (GPS) RWY 23R

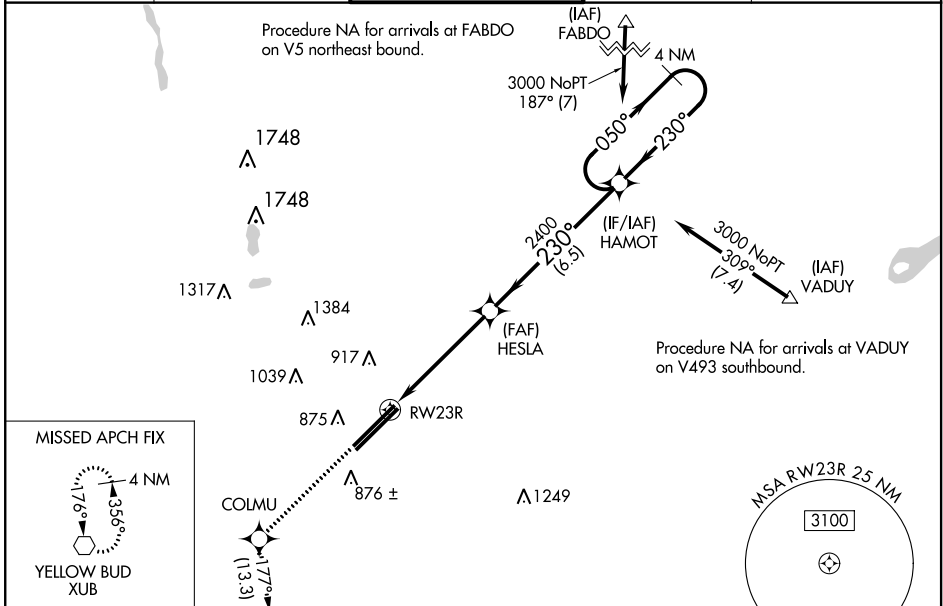
RICKENBACKER INTL (LCK)

RNP APCH.

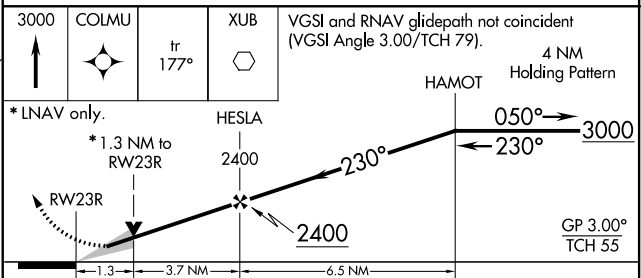
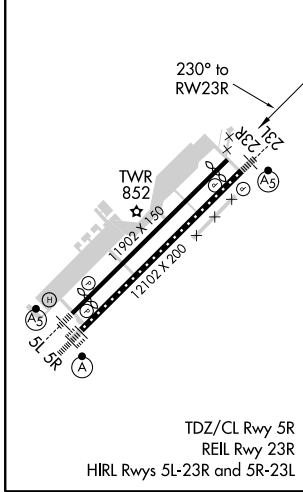
▲ Baro-VNAV NA when using John Glenn Columbus Intl altimeter setting. For uncompensated Baro-VNAV systems, LNAV/VNAV NA below -1.6°C or above 54°C. Circling NA northwest of Rwy 5L-23R. VDP NA with John Glenn Columbus Intl altimeter setting. When local altimeter setting not received, use John Glenn Columbus Intl altimeter setting: increase LPV DA to 978 feet; increase LNAV/VNAV DA to 1041 feet and all visibilities to 1 SM; increase all MDAs 40 feet and Circling Cat D visibility ¼ SM.

MISSED APPROACH: Climb to 3000 direct COLMU and on track 177° to XUB VOR and hold.

ATIS 132.75	COLUMBUS APP CON 134.0 279.6	RICK TOWER 120.05 348.4	GND CON 125.275 275.8	CLNC DEL 125.275 275.8
-----------------------	--	-----------------------------------	---------------------------------	----------------------------------



ELEV 744	D	TDZE 743
-----------------	----------	-----------------



CATEGORY	A	B	C	D
LPV DA		943-¾	200 (200-¾)	
LNAV/VNAV DA		1006-⅞	263 (300-⅞)	
LNAV MDA	1220-1	477 (500-1)	1220-1⅓	477 (500-1⅓)
CIRCLING	1240-1	496 (500-1)	1280-1½ 536 (600-1½)	1400-2 656 (700-2)

EC-2, 07 OCT 2021 to 04 NOV 2021

EC-2, 07 OCT 2021 to 04 NOV 2021