

KUSSO EIGHT DEPARTURE (RNAV)

SC-2, 07 OCT 2021 to 04 NOV 2021

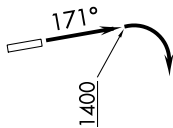
**TOP ALTITUDE:
ASSIGNED BY ATC**

CTAF
123.0
REGIONAL DEP CON
135.975 379.9

TAKEOFF MINIMUMS

Rwy 17: 300-2 or standard with minimum climb of 512' per NM to 1300.

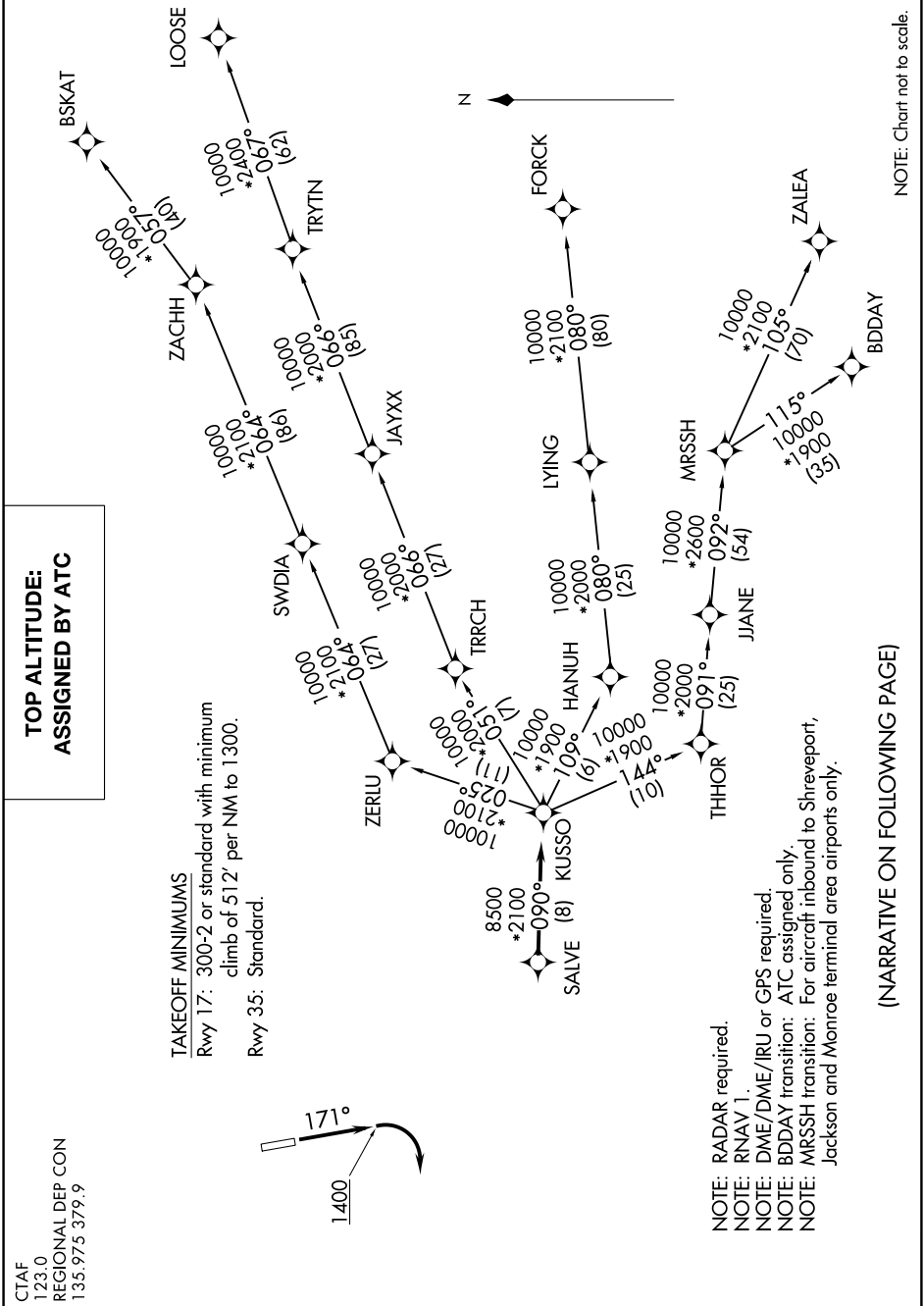
Rwy 35: Standard.



NOTE: Chart not to scale.

(NARRATIVE ON FOLLOWING PAGE)

SC-2, 07 OCT 2021 to 04 NOV 2021



- NOTE: RADAR required.
- NOTE: RNAV 1.
- NOTE: DME/DME/IRU or GPS required.
- NOTE: BDDAY transition: ATC assigned only.
- NOTE: MRSSH transition: For aircraft inbound to Shreveport, Jackson and Monroe terminal area airports only.