

| | | |
|--|------------------------|--|
| WAAS CH 93838 W27A | APP CRS 270° | Rwy Idg 4043 TDZE 1240 Apt Elev 1243 |
|--|------------------------|--|

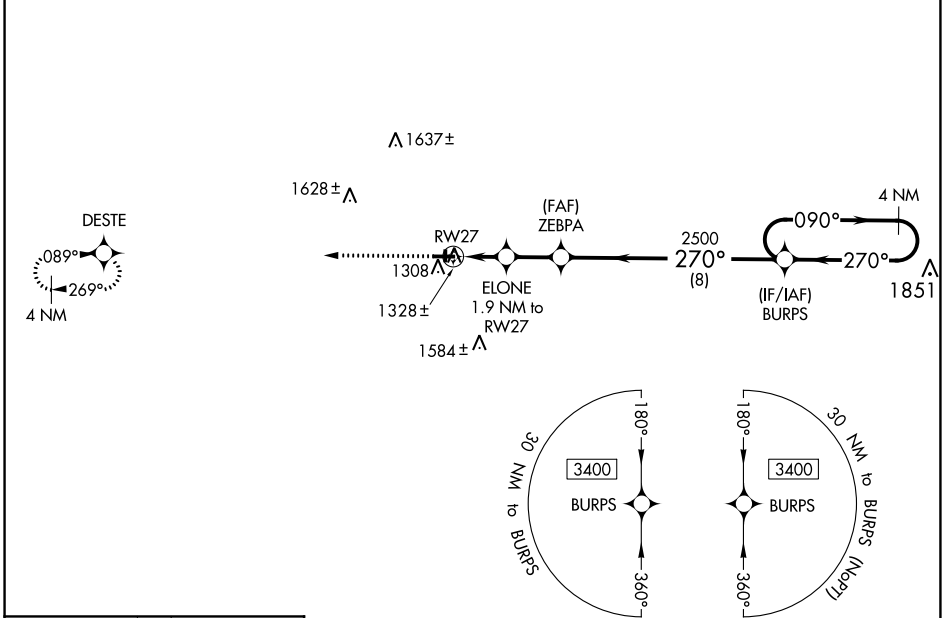
RNAV (GPS) RWY 27

CUMBERLAND MUNI (UBE)

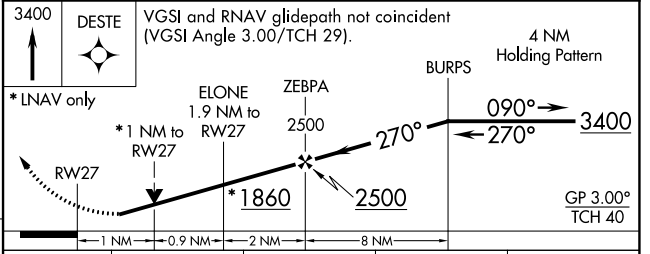
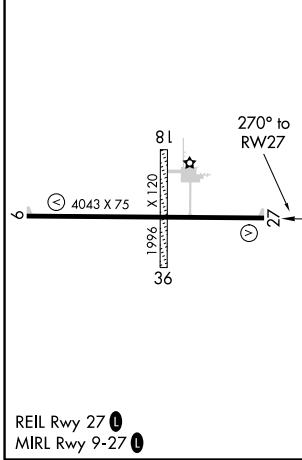
▼ For uncompensated Baro-VNAV systems, LNAV/VNAV NA below -17°C (2°F) or above 54°C (130°F).
▲ Baro-VNAV and VDP NA when using Rice Lake altimeter setting. DME/DME RNP-0.3 NA. Helicopter visibility reduction below 3/4 SM NA. When local altimeter setting not received, use Rice Lake altimeter setting; increase LPV DA to 1533 feet and LNAV/VNAV DA to 1549 feet and all MDA 60 feet; increase LPV all Cats visibility and LNAV Cat C/D visibility 1/8 mile; increase Circling Cat D visibility 1/4 mile.

MISSED APPROACH:
Climb to 3400 direct DESTE and hold.

| | | | |
|----------------------------|--|-----------------------|---------------------------------|
| AWOS-3PT 119.175 | MINNEAPOLIS CENTER 125.3 335.6 | GCO 121.725 | UNICOM 122.8 (CTAF) 0 |
|----------------------------|--|-----------------------|---------------------------------|



| | |
|-----------|-----------|
| ELEV 1243 | TDZE 1240 |
|-----------|-----------|



| CATEGORY | A | B | C | D |
|-------------------|-----------------------|-----------------------|-----------------------|-------------------------------|
| LPV DA | | 1490-1 | 250 (300-1) | |
| LNAV/VNAV DA | | 1506-1 | 266 (300-1) | |
| LNAV MDA | | 1580-1 | 340 (400-1) | |
| C CIRCLING | 1640-1 397 (400-1) | 1940-1 697 (700-1) | 1940-2 697 (700-2) | 1980-2 1/4 737 (800-2 1/4) |

EC-3, 07 OCT 2021 to 04 NOV 2021

EC-3, 07 OCT 2021 to 04 NOV 2021