

APP CRS	Rwy Idg	4000
267°	TDZE	320
	Apt Elev	321

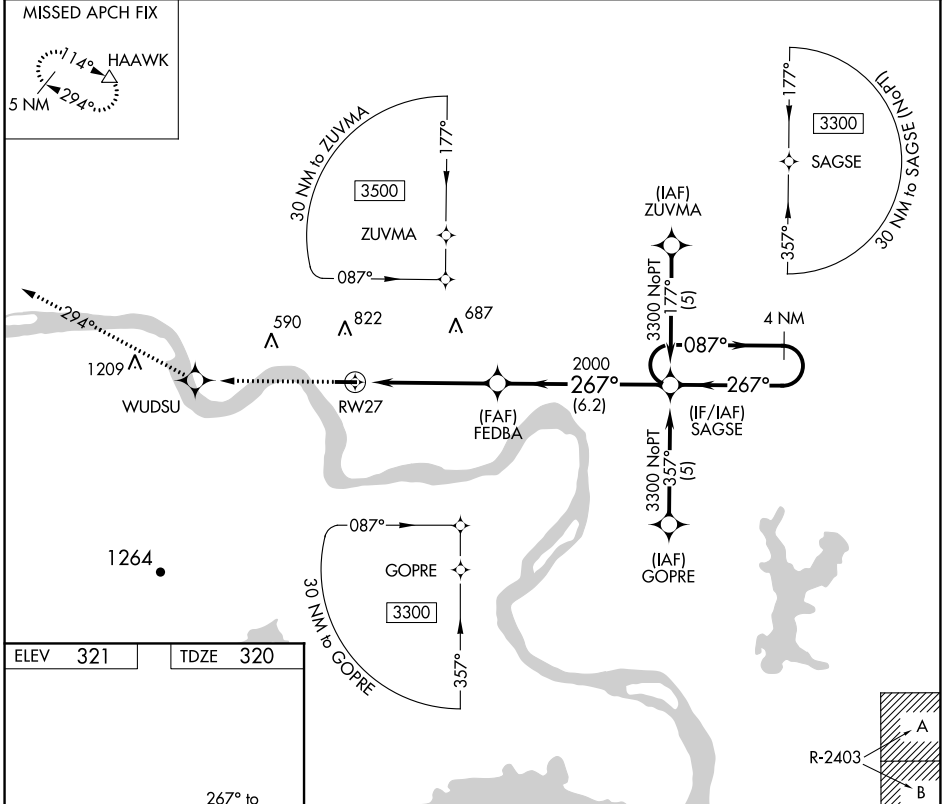
RNAV (GPS) RWY 27

MORRILTON MUNI (BDQ)

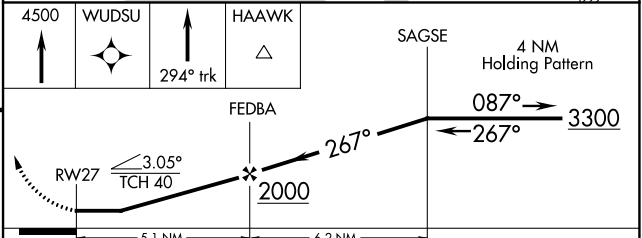
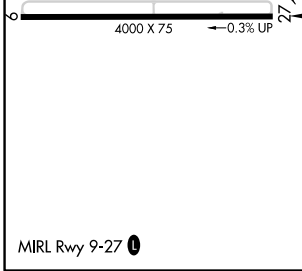
RNP APCH-GPS.
 ▼ Use Russellville altimeter setting; when not received, use
 ▲ NA Little Rock altimeter setting. Procedure NA at night.

MISSED APPROACH: Climb to 4500 direct WUDSU and via 294° track to HAAWK and hold.

RUE AWOS 132.475	MEMPHIS CENTER 128.475 377.15	UNICOM 122.8 (CTAF)	122.9
----------------------------	---	-------------------------------	--------------



ELEV	321	TDZE	320
------	-----	------	-----



CATEGORY	A	B	C	D
LNAV MDA	1060-1	740 (800-1)	NA	
CIRCLING	1060-1 739 (800-1)	1260-1¼ 939 (1000-1¼)	NA	

SC-1, 07 OCT 2021 to 04 NOV 2021

SC-1, 07 OCT 2021 to 04 NOV 2021