

WAAS CH 86711	APP CRS 146°	Rwy Idg TDZE Apt Elev	5001 10 10
W15A			

RNAV (GPS) RWY 15

SOUTHLAND FLD (U XL)

RNP APCH-GPS

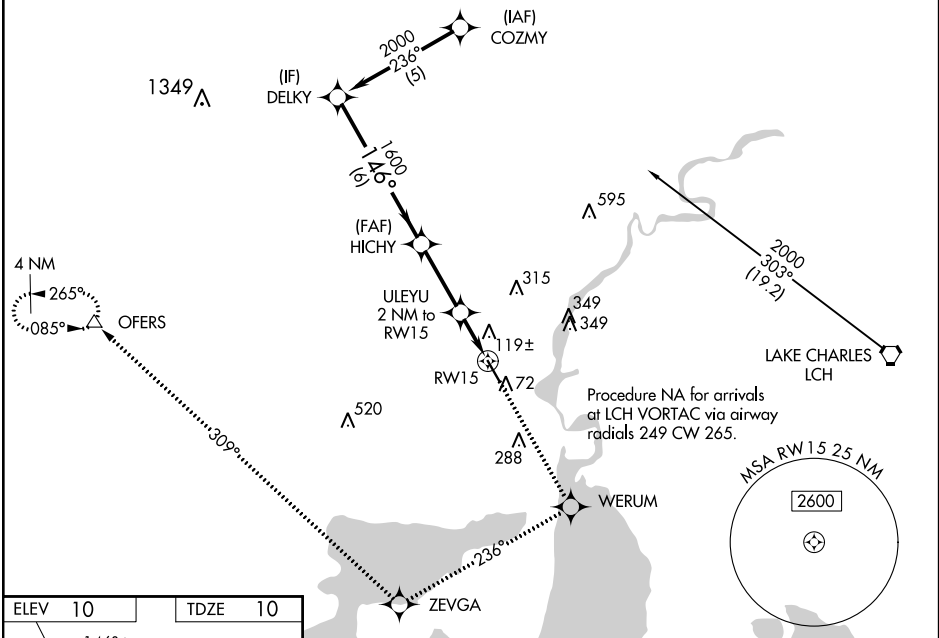
⚠ Inoperative table does not apply to LNAV/VNAV. Baro-VNAV NA when using Lake Charles Rgnl altimeter setting. For uncompensated Baro-VNAV systems, LNAV/VNAV NA below -15°C or above 48°C. Rwy 15 helicopter visibility reduction below 3/4 SM NA. When local altimeter setting not received, use Lake Charles Rgnl altimeter setting and increase LPV DA to 438 feet and all visibilities 1/4 SM; increase LNAV/VNAV DA to 438 feet; increase all MDAs 20 feet and Circling visibility Cat C/D 1/4 SM. VDP NA when using Lake Charles Rgnl altimeter setting.

ODALS

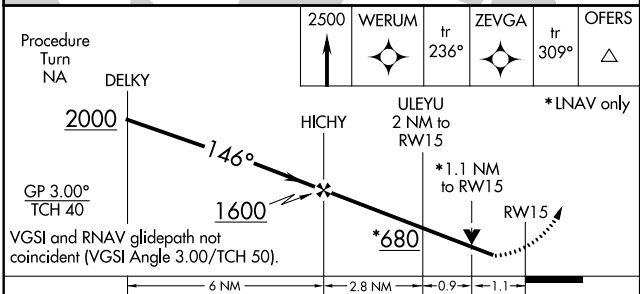
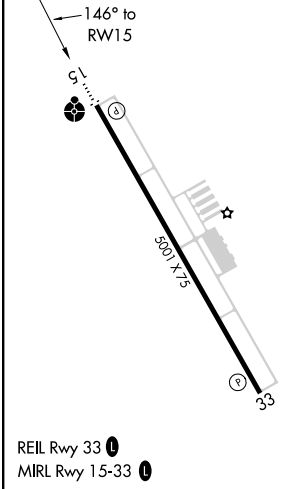


MISSED APPROACH: Climb to 2500 direct WERUM and via 236° track to ZEVGA and via 309° track to OFERS and hold.

AWOS-3PT 118.175	LAKE CHARLES APP CON * 119.35 282.3	UNICOM 122.8 (CTAF) 0
----------------------------	---	---------------------------------



ELEV 10	TDZE 10
---------	---------



Procedure Turn NA	DELKY	HICHY	ULEYU 2 NM to RW15	ZEVGA	OFERS
2500	WERUM	tr 236°	ZEVGA	tr 309°	OFERS
*LNAV only					
GP 3.00° TCH 40	VGSIs and RNAV glidepath not coincident (VGSIs Angle 3.00/TCH 50).				
CATEGORY	A	B	C	D	
LPV DA	309-1		299 (300-1)		
LNAV/VNAV DA	419-1½		409 (500-1½)		
LNAV MDA	380-¾		370 (400-¾)		380-1¼ 370 (400-1¼)
CIRCLING	420-1 410 (500-1)	520-1 510 (600-1)	680-1¾ 670 (700-1¾)		680-2 670 (700-2)

SC-4, 07 OCT 2021 to 04 NOV 2021

SC-4, 07 OCT 2021 to 04 NOV 2021