

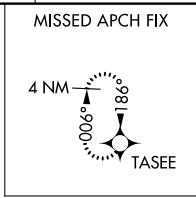
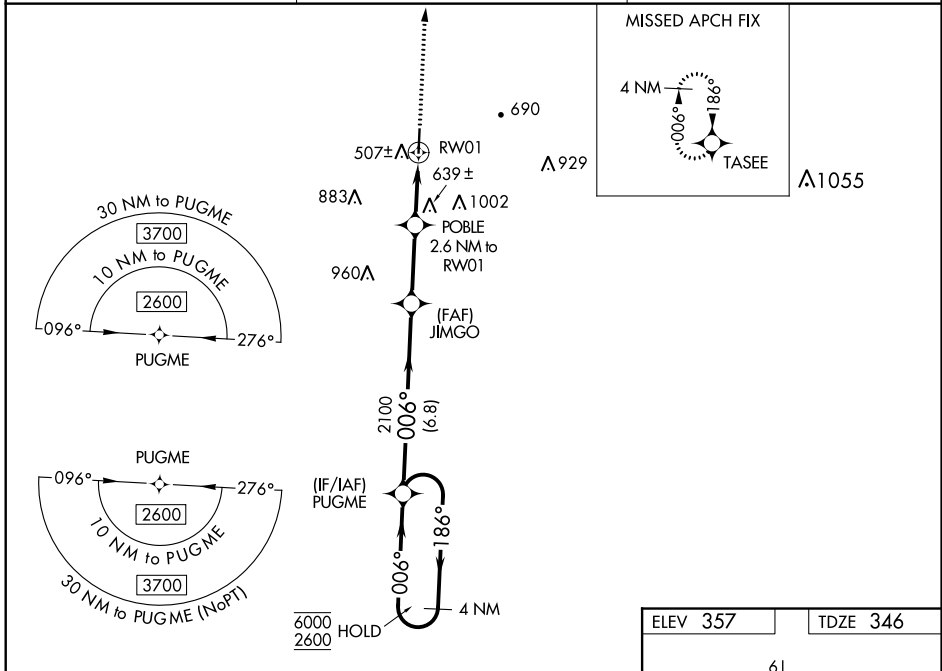
WAAS CH 42623 W01A	APP CRS 006°	Rwy Idg TDZE 346 Apt Elev 357	5009
--	------------------------	---	-------------

RNAV (GPS) RWY 1

RICHARD ARTHUR FIELD (M95)

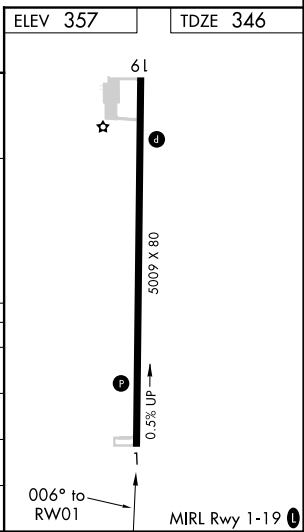
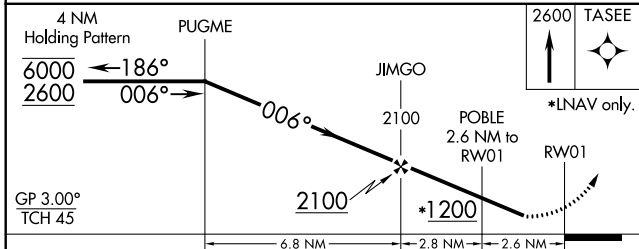
RNP APCH.	<p>Procedure NA at night. Rwy 1 helicopter visibility reduction below 1 SM NA. Baro-VNAV NA. Use Jasper altimeter setting; when not received, use Tuscaloosa altimeter setting and increase LPV DA to 680, LNAV/VNAV DA to 1008, and all MDA 20 feet; increase LNAV/VNAV all Cat visibility ¼ SM.</p>	MISSED APPROACH: Climb to 2600 direct TASEE and hold.
-----------	---	--

JFX AWOS-3PT 119.225	COLUMBUS APP CON * 126.075 239.25	UNICOM 122.8 (CTAF) 0
--------------------------------	---	---------------------------------



SE-4, 07 OCT 2021 to 04 NOV 2021

SE-4, 07 OCT 2021 to 04 NOV 2021



CATEGORY	A	B	C	D
LPV DA	679-1 ½ 333 (400-1 ½)			
LNAV/VNAV DA	1007-2 ¼ 661 (700-2 ¼)			
LNAV MDA	980-1	634 (700-1)	980-1 ⅞	634 (700-1 ⅞)
CIRCLING	1020-1 663 (700-1)	1060-1 703 (800-1)	1060-2 703 (800-2)	1100-2 ½ 743 (800-2 ½)