

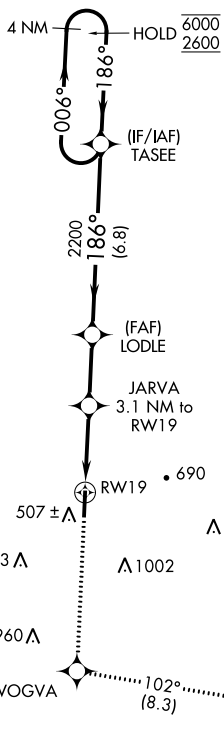
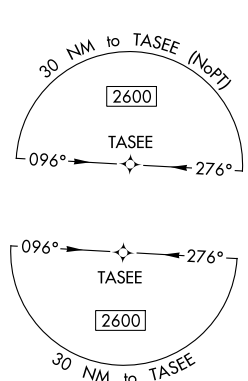
APP CRS	Rwy Idg	5009
186°	TDZE	357
	Apt Elev	357

RNAV (GPS) RWY 19

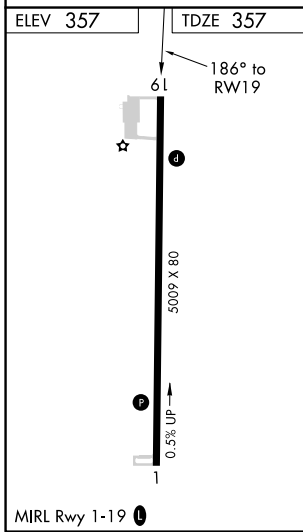
RICHARD ARTHUR FIELD (M95)

RNP APCH.	<p>Procedure NA at night. Rwy 19 helicopter visibility reduction below 1 SM NA. Use Jasper altimeter setting.</p>	<p>MISSED APPROACH: Climb to 2600 direct WOGVA and on track 102° to BESOM and hold.</p>
-----------	---	---

JFX AWOS-3PT 119.225	COLUMBUS APP CON ★ 126.075 239.25	UNICOM 122.8 (CTAF)
--------------------------------	---	-------------------------------



▲1167



2600	WOGVA	tr 102°	BESOM	Visual Segment - Obstacles.	4 NM Holding Pattern
				TASEE	
		JARVA 3.1 NM to RW19	LODLE		
		1380	2200		
		3.1 NM	2.6 NM	6.8 NM	
CATEGORY	A	B	C	D	
LNAV MDA	1080-1	723 (800-1)	1080-2	723 (800-2)	

SE-4, 07 OCT 2021 to 04 NOV 2021

SE-4, 07 OCT 2021 to 04 NOV 2021