

APP CRS	Rwy Idg	2697
140°	TDZE	762
	Apt Elev	773

RNAV (GPS) RWY 14

EPHRAIM-GIBALTAR (3D2)

RNP APCH.

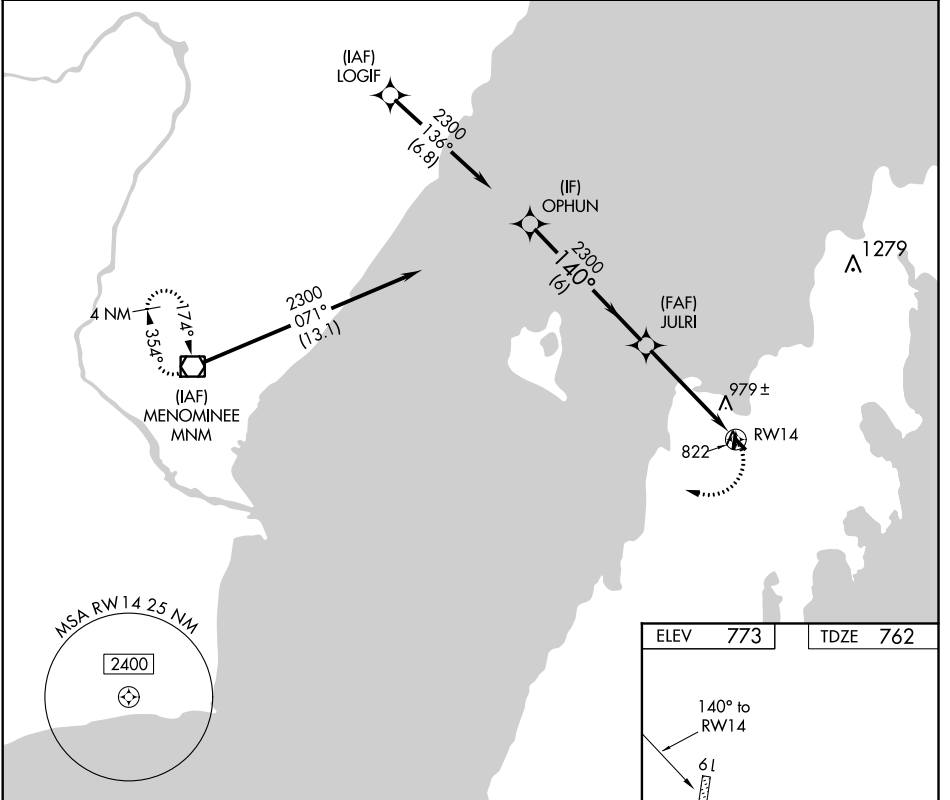
- Rwy 14 helicopter visibility reduction below 3/4 SM NA. Use Door County Cherryland altimeter setting; when not received, use Menominee altimeter setting and increase all MDA 20 feet.
- NA

MISSED APPROACH: Climbing right turn to 3000 direct MNM VOR/DME and hold.

AWOS-3PT
124.175

GREEN BAY APP CON*
120.3 338.2

UNICOM
123.0 (CTAF) 0



EC-3, 07 OCT 2021 to 04 NOV 2021

EC-3, 07 OCT 2021 to 04 NOV 2021

