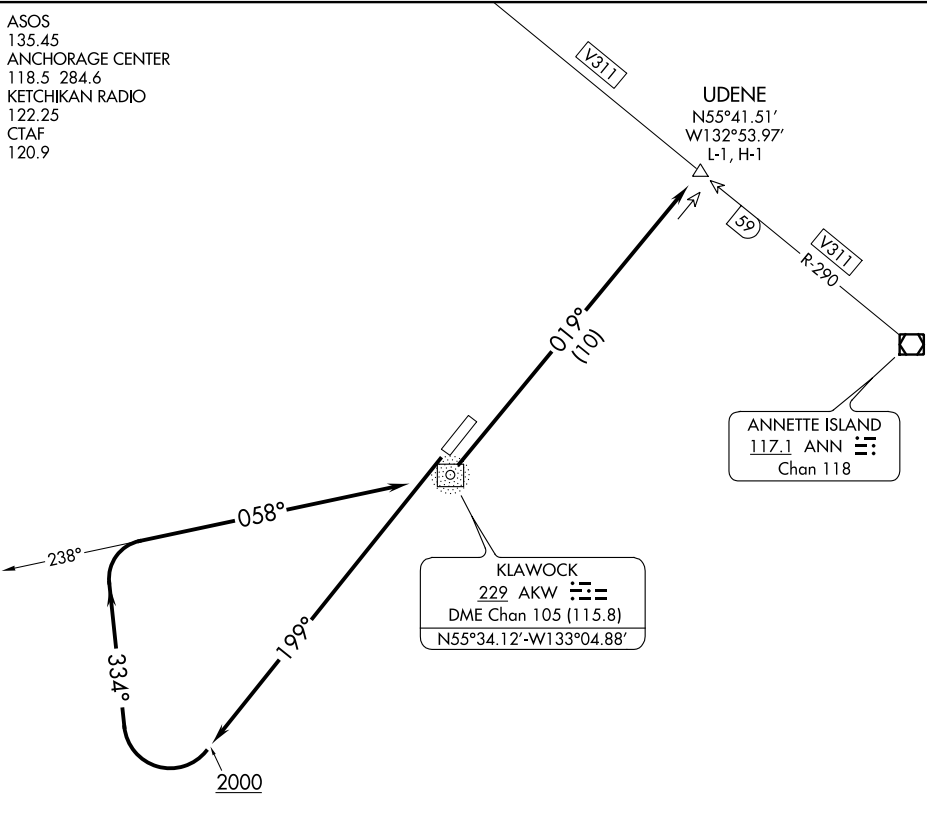


KLAWOCK TWO DEPARTURE (OBSTACLE)

ASOS
135.45
ANCHORAGE CENTER
118.5 284.6
KETCHIKAN RADIO
122.25
CTAF
120.9



AK, 07 OCT 2021 to 02 DEC 2021

AK, 07 OCT 2021 to 02 DEC 2021

TAKEOFF MINIMUMS

Rwy 2: NA - Obstacles.

Rwy 20: Standard with a minimum climb of 427' per NM to 1500.

TAKEOFF OBSTACLE NOTE

Rwy 20: Trees 5964' from DER, 1369' left of centerline, up to 158' AGL/357' MSL.

NOTE: DME required.

NOTE: Chart not to scale.

DEPARTURE ROUTE DESCRIPTION

TAKEOFF RUNWAY 20: Climb heading 199° to 2000, then climbing right turn to 6000 on heading 334° to intercept bearing 238° from AKW NDB/DME to AKW NDB/DME, then on bearing 019° to UDENE INT/ANN 59 DME.