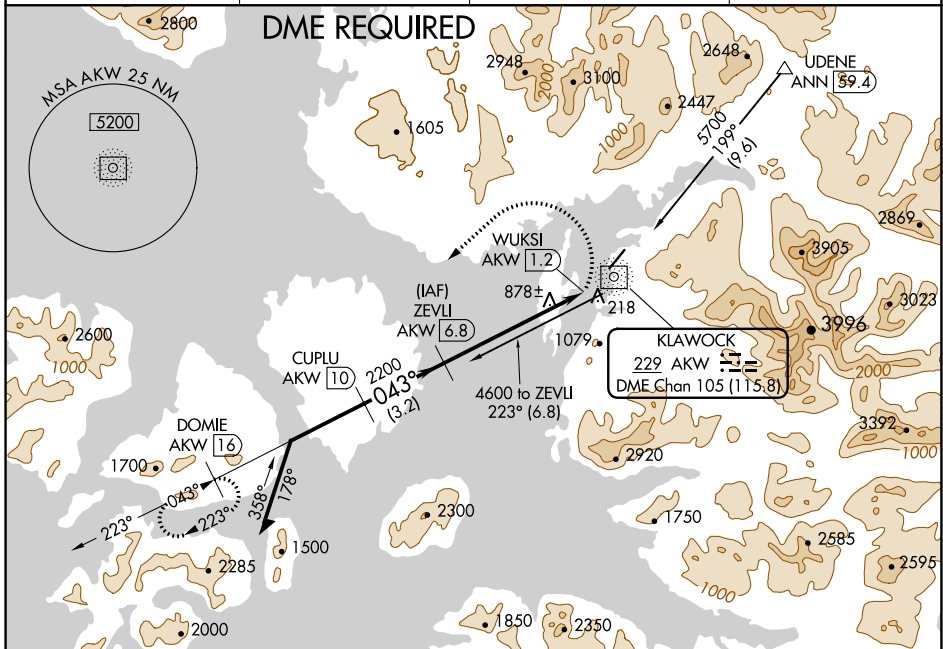


NDB/DME AKW <b>229</b>	APP CRS <b>043°</b>	Rwy Idg TDZE Apt Elev	<b>5000</b> <b>57</b> <b>80</b>
Chan <b>105 (115.8)</b>			

# NDB/DME RWY 2

KLAWOCK (AKW) (PAKW)

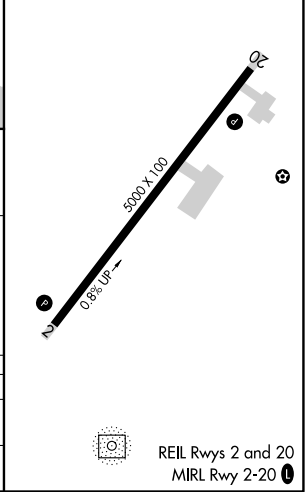
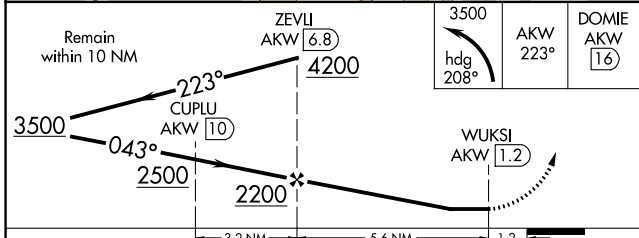
<p>Circling NA east of Rwy 2-20. -10°C</p>		<p>MISSED APPROACH: Climbing left turn to 3500 on heading 208° and AKW NDB/DME bearing 223° to DOME/16 DME and hold.</p>	
ASOS <b>135.45</b>	ANCHORAGE CENTER <b>118.5 284.6</b>	KETCHIKAN RADIO <b>122.25 0</b>	CTAF <b>120.9</b>



AK, 07 OCT 2021 to 02 DEC 2021

AK, 07 OCT 2021 to 02 DEC 2021

ELEV	80	TDZE	57
------	----	------	----



CATEGORY	A	B	C	D
S-2	1180-1½ 1123 (1100-1½)		1180-3 1123 (1100-3)	NA
CIRCLING	1180-1½ 1100 (1100-1½)		1180-3 1100 (1100-3)	NA