

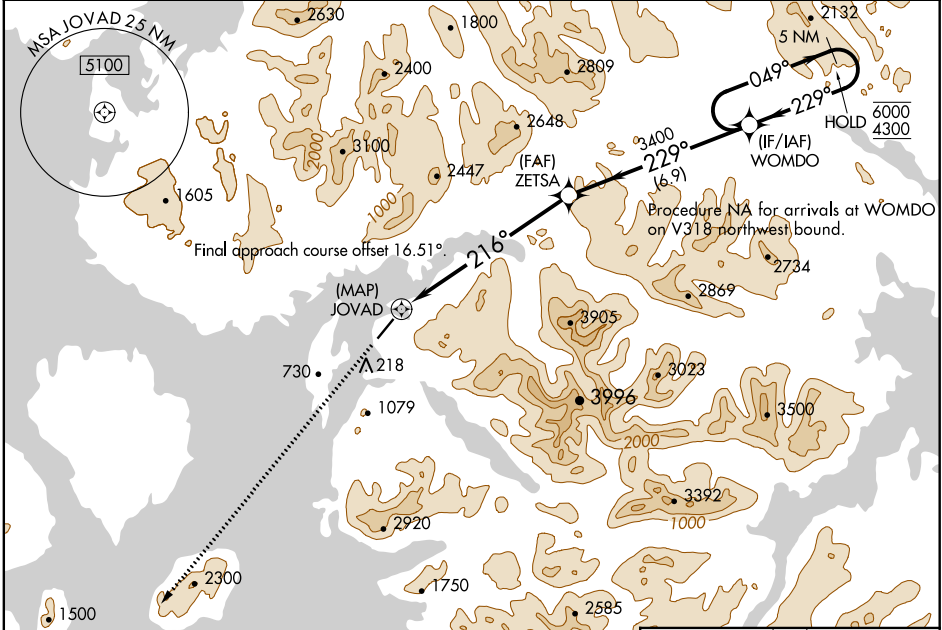
APP CRS	Rwy Idg	<b>5000</b>
<b>216°</b>	TDZE	<b>80</b>
	Apt Elev	<b>80</b>

# RNAV (GPS) RWY 20

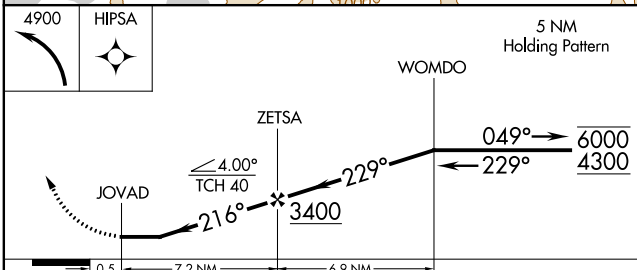
KLAWOCK (AKW) (PAKW)

RNP APCH.		MISSED APPROACH: Climbing left turn to 4900 direct HIPSA and hold.	
Rwy 20 helicopter visibility reduction below 1 SM NA. Circling NA east of Rwy 2-20. Procedure NA at night.			

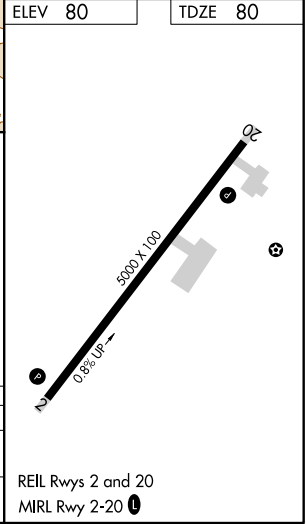
ASOS	ANCHORAGE CENTER	KETCHIKAN RADIO	CTAF
<b>135.45</b>	<b>118.5 284.6</b>	<b>122.25</b>	<b>120.9</b>



ELEV 80	TDZE 80
---------	---------



CATEGORY	A	B	C	D
RNAV MDA	2440-1¼ 2360 (2400-1¼)	2440-1½ 2360 (2400-1½)		NA
CIRCLING	2440-1¼ 2360 (2400-1¼)	2440-1½ 2360 (2400-1½)		NA



AK, 07 OCT 2021 to 02 DEC 2021

AK, 07 OCT 2021 to 02 DEC 2021