

APP CRS	Rwy Idg	4041
013°	TDZE	273
	Apt Elev	273

RNAV (GPS) RWY 2

TICONDEROGA MUNI (4B6)

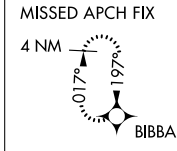
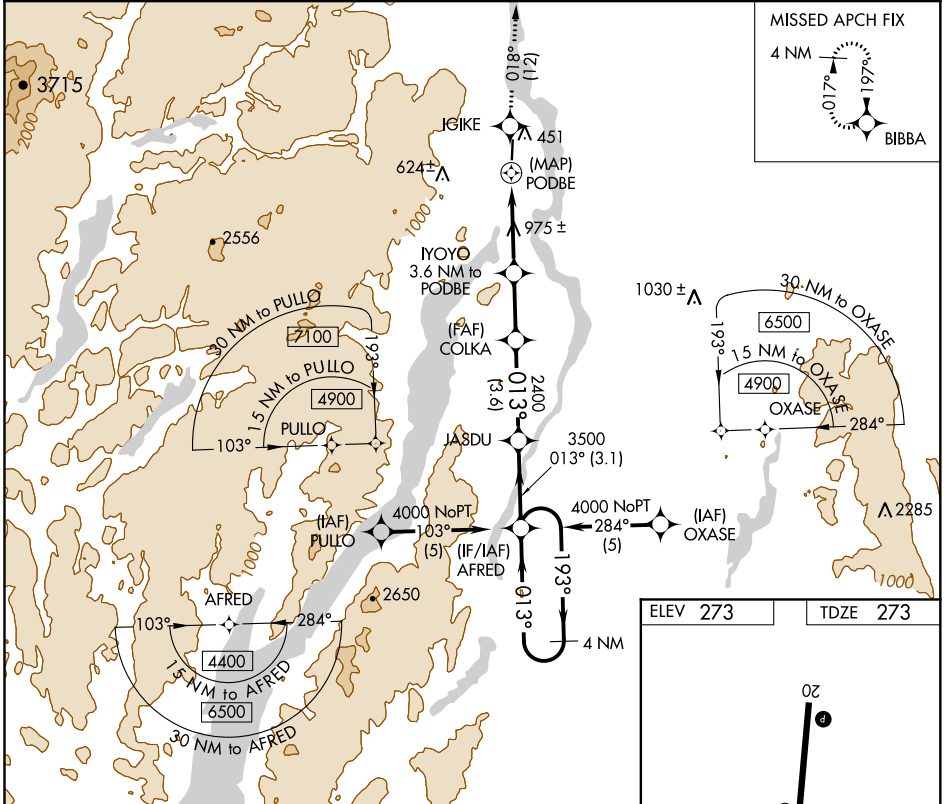
RNP APCH.

NA Use Burlington altimeter setting. Procedure NA at night.
Rwy 2 helicopter visibility reduction below 1 SM NA.

MISSED APPROACH: Climb to 4000 direct IGIKE and on track 018° to BIBBA and hold.

BOSTON CENTER
135.7 282.2

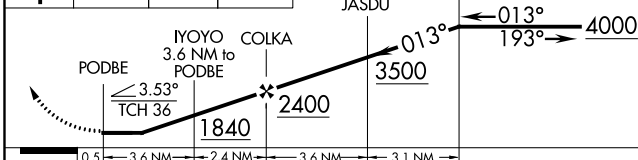
UNICOM
122.8 (CTAF)



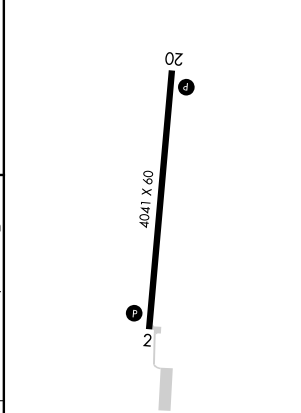
NE-2, 07 OCT 2021 to 04 NOV 2021

NE-2, 07 OCT 2021 to 04 NOV 2021

4000	IGIKE	BIBBA	VGSI and descent angles not coincident (VGSI Angle 3.00/TCH 46).
↑	✧	✧	4 NM Holding Pattern
	tr 018°		



ELEV 273	TDZE 273
----------	----------



CATEGORY	A	B	C	D
LNAV MDA	1520-1¼ 1247 (1300-1¼)	1520-1½ 1247 (1300-1½)	NA	

MIRL Rwy 2-20
REIL Rwy 2 and 20