

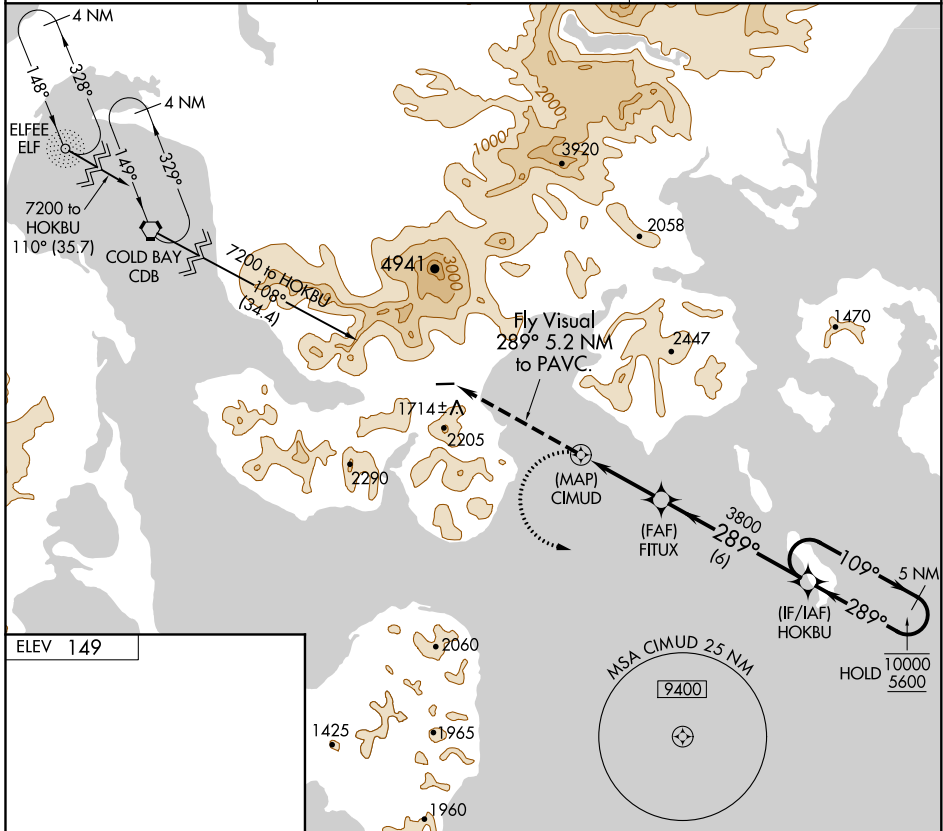
APP CRS 289°	Rwy Idg TDZE Apt Elev	N/A N/A 149
------------------------	-----------------------------	--

RNAV (GPS)-A

KING COVE (KVC)(PAVC)

RNP APCH.	MISSED APPROACH: Climbing left turn to 5600 direct HOKBU and hold.
<p>▼ Procedure NA at night.</p> <p>▲ Circling NA north Rwy 8 and 26.</p>	

AWOS-3P 118.325	ANCHORAGE CENTER 118.5 278.3	CTAF 122.9
---------------------------	--	----------------------



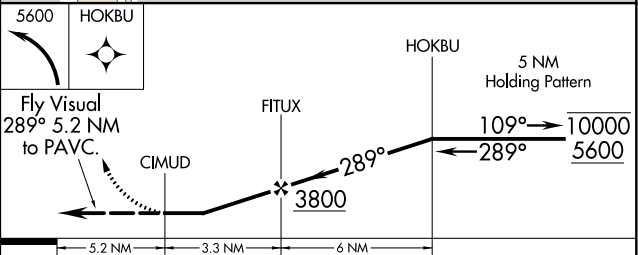
ELEV **149**

3500 x 115

Fly Visual 289° 5.2 NM to PAVC.

REIL Rwy 8 and 26 **1**

MIRL Rwy 8-26 **1**



CATEGORY	A	B	C	D
1 CIRCLING	2080-6 1931 (2000-6)	2520-6 2371 (2400-6)	NA	

AK, 07 OCT 2021 to 02 DEC 2021

AK, 07 OCT 2021 to 02 DEC 2021