

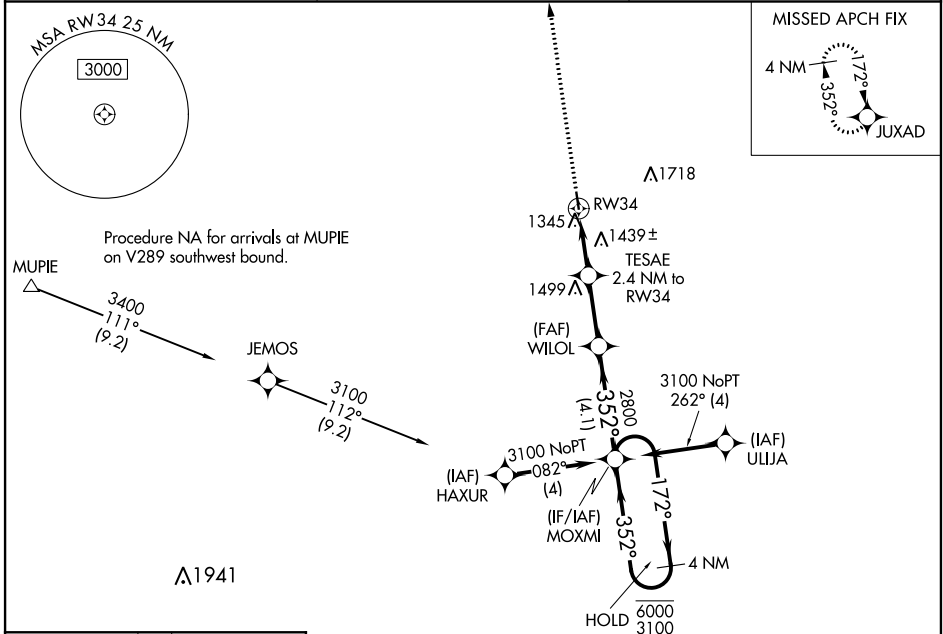
WAAS CH 72728 W34A	APP CRS 352°	Rwy Idg TDZE 1191 Apt Elev 1195
--	------------------------	---

RNAV (GPS) RWY 34

HOUSTON MEML (M48)

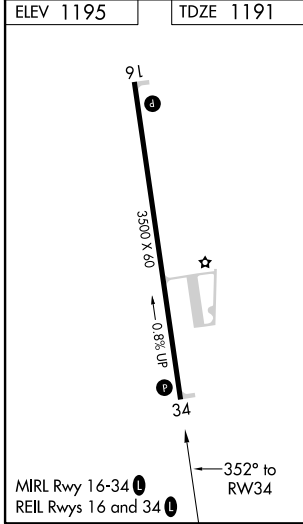
RNP APCH-GPS.	MISSED APPROACH: Climb to 3400 direct JUXAD and hold.
<p>Baro-VNAV NA. Use Fort Leonard Wood altimeter setting, when not received use West Plains altimeter setting.</p>	

TBN ASOS 118.7	KANSAS CITY CENTER 128.35 284.675	CTAF 122.9
--------------------------	---	----------------------



NC-3, 07 OCT 2021 to 04 NOV 2021

NC-3, 07 OCT 2021 to 04 NOV 2021



3400 JUXAD	VGSI and RNAV glidepath not coincident (VGSI Angle 4.00/TCH 39).		MOXMI 4 NM Holding Pattern
↑	WILOL 2800	TESAE 2.4 NM to RW34	6000 3100
	1980	2800	GP 3.00° TCH 40
	2.4 NM	2.6 NM	4.1 NM
CATEGORY	A	B	C D
LPV DA	1509-1	318 (400-1)	NA
LNAV/VNAV DA	1740-1 ⁵ / ₈	549 (600-1 ⁵ / ₈)	NA
LNAV MDA	1740-1	549 (600-1)	NA
CIRCLING	1760-1 565 (600-1)	1880-1 685 (700-1)	NA