

APP CRS <b>273°</b>	Rwy Idg <b>3300</b>
	TDZE <b>274</b>
	Apt Elev <b>274</b>

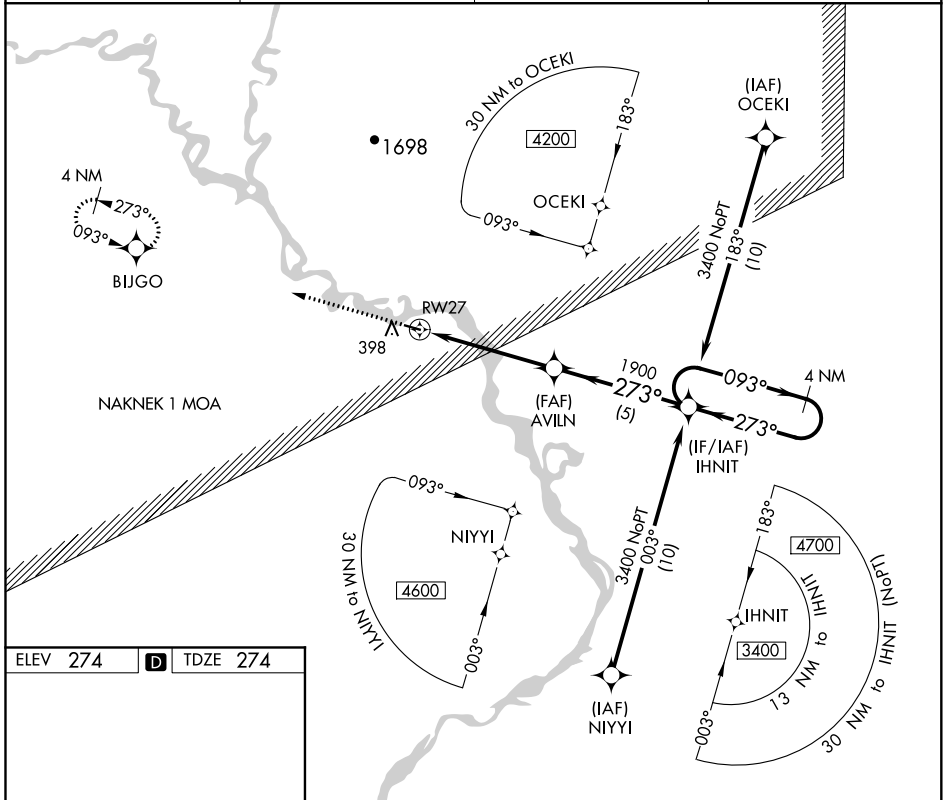
# RNAV (GPS) RWY 27

KOLIGANEK (JZZ) (PAJZ)

**⚠** When local altimeter setting not received, use New Stuyahok altimeter setting and increase all MDAs 60 feet. DME/DME RNP-0.3 NA.  
**⚠** Helicopter visibility reduction below 1 SM NA. Procedure NA at night.

MISSED APPROACH: Climb to 2900 direct BIJGO and hold.

AWOS-3P <b>118.525</b>	ANCHORAGE CENTER <b>132.75 282.35</b>	DILLINGHAM RADIO <b>122.55</b>	CTAF <b>122.9</b>
---------------------------	------------------------------------------	-----------------------------------	----------------------



ELEV 274 **D** TDZE 274

1.0% UP → 3300 X 75

273° to RWY 27

MIRL Rwy 9-27 **Ⓛ**

2900	BIJGO	Visual Segment - Obstacles.	
↑	✧	IHNIT	4 NM Holding Pattern
		AVILN	
		RWY 27	
		1900	
		5 NM	5 NM
CATEGORY	A	B	C
LNAV MDA	780-1	506 (600-1)	NA
<b>C</b> CIRCLING	780-1	506 (600-1)	NA

AK, 07 OCT 2021 to 02 DEC 2021

AK, 07 OCT 2021 to 02 DEC 2021