

WAAS CH 53622 W23A	APP CRS 232°	Rwy Idg TDZE 441 Apt Elev 441
--	------------------------	---

RNAV (GPS) RWY 23

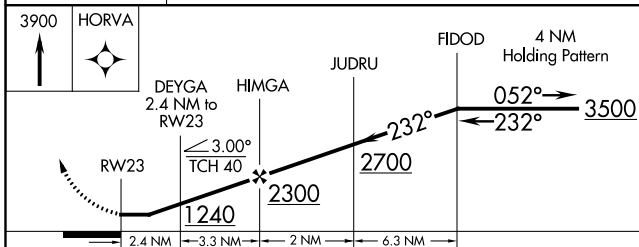
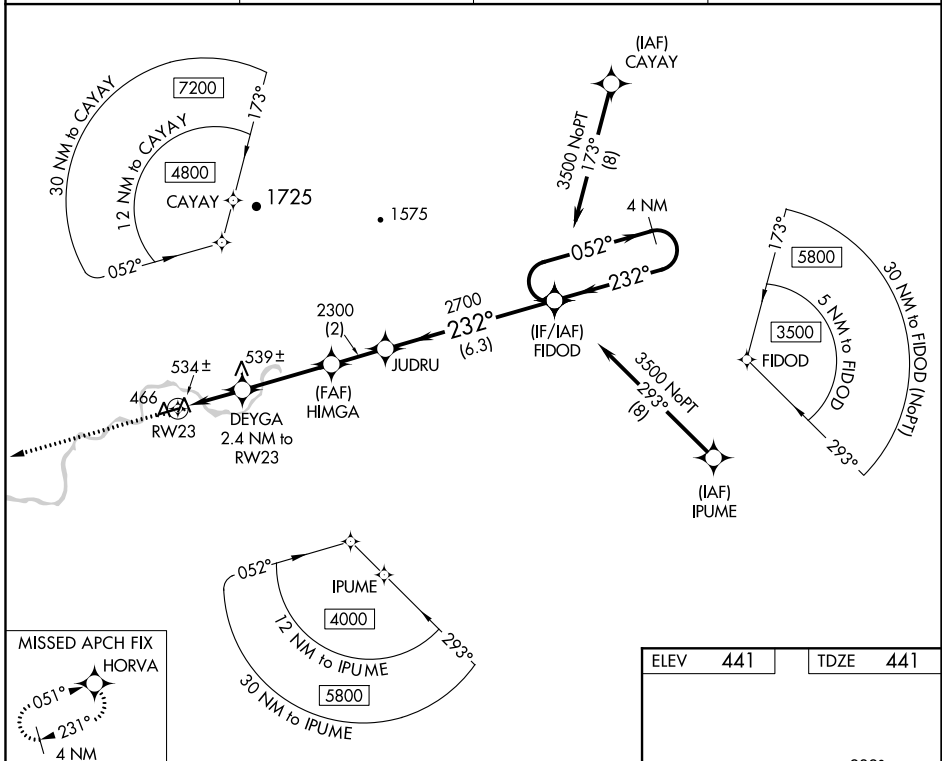
ALLAKAKET (6A8) (PFAL)

NA
-44°C

DME/DME RNP-0.3 NA. Visibility reduction by helicopter below 3/4 SM NA. Use Bettes olimeter setting.

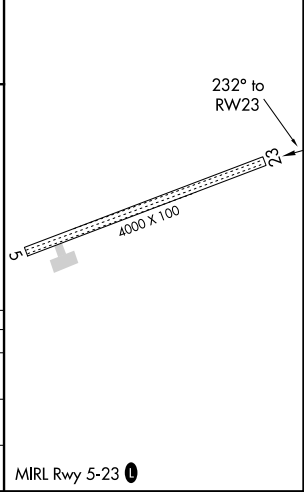
MISSED APPROACH: Climb to 3900 direct HORVA and hold, continue climb-in-hold to 3900.

BTT/PABT ASOS 135.45	ANCHORAGE CENTER 124.6 352.0	FAIRBANKS RADIO 122.2	CTAF 122.9
--------------------------------	--	---------------------------------	----------------------



ELEV 441	TDZE 441
-----------------	-----------------

CATEGORY	A	B	C	D
LP MDA	900-1	459 (500-1)	900-1 3/8 459 (500-1 3/8)	NA
LNAV MDA	900-1	459 (500-1)	900-1 3/8 459 (500-1 3/8)	NA
CIRCLING	1100-1 659 (700-1)	1160-1 719 (800-1)	1200-2 1/4 759 (800-2 1/4)	NA



AK, 07 OCT 2021 to 02 DEC 2021

AK, 07 OCT 2021 to 02 DEC 2021

MIRL Rwy 5-23