

**TOP ALTITUDE:
ASSIGNED BY ATC**

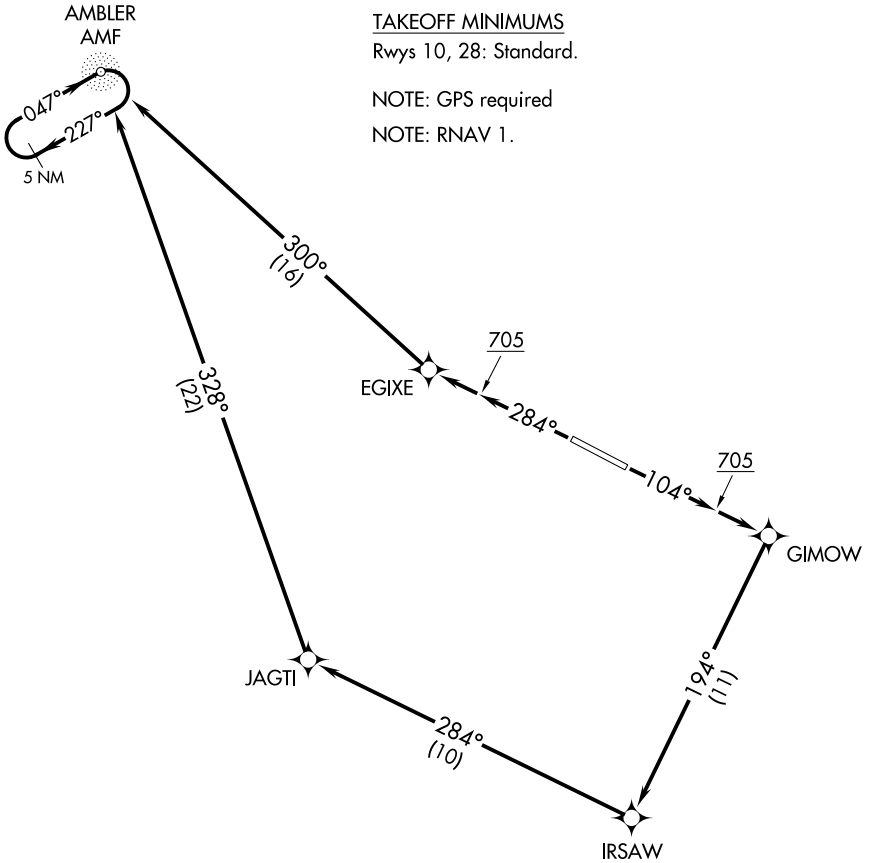
ANCHORAGE CENTER
119.2 263.0
CTAF
122.7

TAKEOFF MINIMUMS

Rwys 10, 28: Standard.

NOTE: GPS required

NOTE: RNAV 1.



NOTE: Chart not to scale.

DEPARTURE ROUTE DESCRIPTION

TAKEOFF RUNWAY 10: Climb on heading 104° to 705, then direct GIMOW then on depicted route, thence. . .

TAKEOFF RUNWAY 28: Climb on heading 284° to 705, then direct EGIXE then on depicted route, thence. . . .

. . . .Maintain 4000 or as assigned by ATC.

AK, 07 OCT 2021 to 02 DEC 2021

AK, 07 OCT 2021 to 02 DEC 2021