

WAAS CH 48814 W09A	APP CRS 091°	Rwy Idg TDZE 244 Apt Elev 244	3401
--	------------------------	---	-------------

RNAV (GPS) RWY 9

CHUATHBALUK (9A3) (PACH)

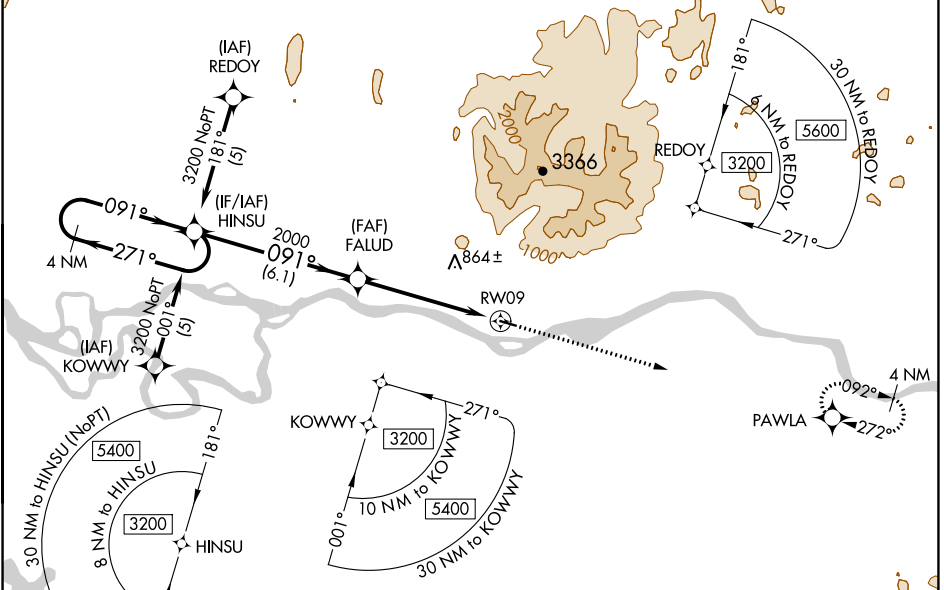
NA
-32°C

Circling NA north of Rwy 9-27. DME/DME RNP- 0.3 NA. Visibility reduction by helicopters NA. Use Aniak altimeter setting; when not received, use Kalskag altimeter setting and increase all DA 58 feet and MDA 60 feet and increase LPV all Cats visibility ¼ mile, and increase LNAV and circling Cat C visibility ¼ mile.

MISSED APPROACH: Climb to 3400 direct PAWLA and hold.

ANCHORAGE CENTER
118.15 251.05

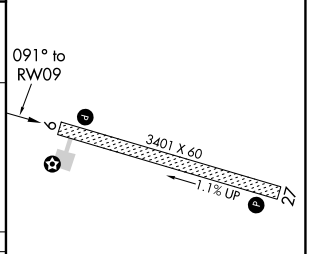
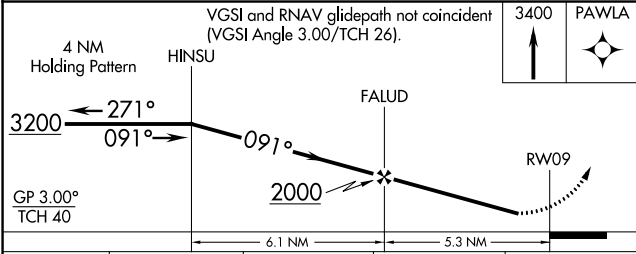
CTAF
122.9



AK, 07 OCT 2021 to 02 DEC 2021

AK, 07 OCT 2021 to 02 DEC 2021

ELEV 244	TDZE 244
----------	----------



CATEGORY	A	B	C	D
LPV DA	652-1½ 408 (500-1½)			NA
LNAV MDA	1000-1 756 (800-1)	1000-1¼ 756 (800-1¼)	1000-2¼ 756 (800-2¼)	NA
CIRCLING	1000-1 756 (800-1)	1000-1¼ 756 (800-1¼)	1000-2¼ 756 (800-2¼)	NA

MIRL Rwy 9-27
REIL Rws 9 and 27