

WAAS CH <b>72727</b> <b>W25A</b>	APP CRS <b>247°</b>	Rwy Idg TDZE Apt Elev	<b>5500</b> <b>595</b> <b>595</b>
--	------------------------	-----------------------------	---

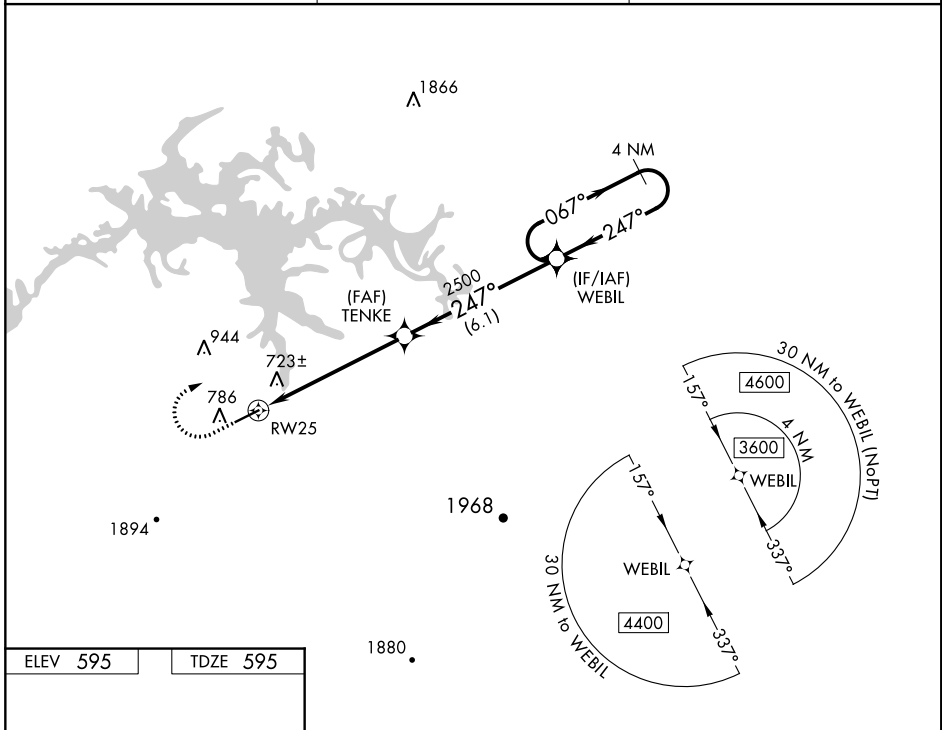
# RNAV (GPS) RWY 25

CENTRE-PIEDMONT CHEROKEE COUNTY RGNL (PYP)

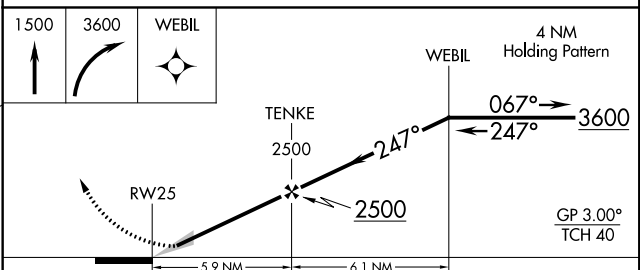
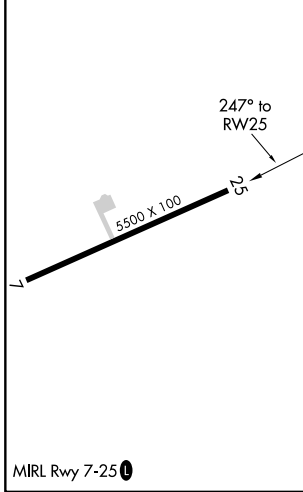
**NA** Baro-VNAV NA. DME/DME RNP-0.3 NA. Use Gadsden altimeter setting, when not received, use Anniston altimeter setting and increase all DA/MDA 20 feet.

**MISSED APPROACH:** Climb to 1500 then climbing right turn to 3600 direct WEBIL and hold.

GAD AWOS-3PT <b>127.825</b>	ATLANTA CENTER <b>124.5 270.325</b>	CTAF <b>122.9</b>
--------------------------------	--	----------------------



ELEV 595	TDZE 595
----------	----------



CATEGORY	A	B	C	D
LPV DA	856-7/8		261 (300-7/8)	
LNAV/VNAV DA	1064-1 5/8		469 (500-1 5/8)	
LNAV MDA	1180-1 585 (600-1)		1180-1 3/4 585 (600-1 3/4)	
CIRCLING	1180-1 585 (600-1)		1180-1 3/4 585 (600-1 3/4)	1180-2 585 (600-2)

SE-4, 07 OCT 2021 to 04 NOV 2021

SE-4, 07 OCT 2021 to 04 NOV 2021