

WAAS CH <b>86909</b> W02A	APP CRS <b>026°</b>	Rwy Idg TDZE Apt Elev	<b>5500</b> <b>1028</b> <b>1028</b>
---------------------------------	------------------------	-----------------------------	---

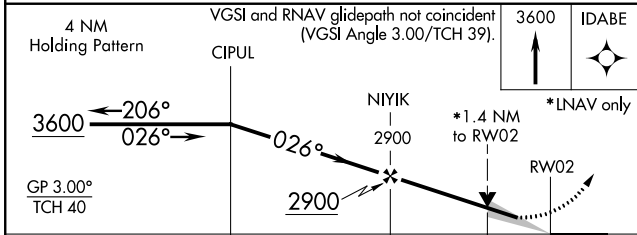
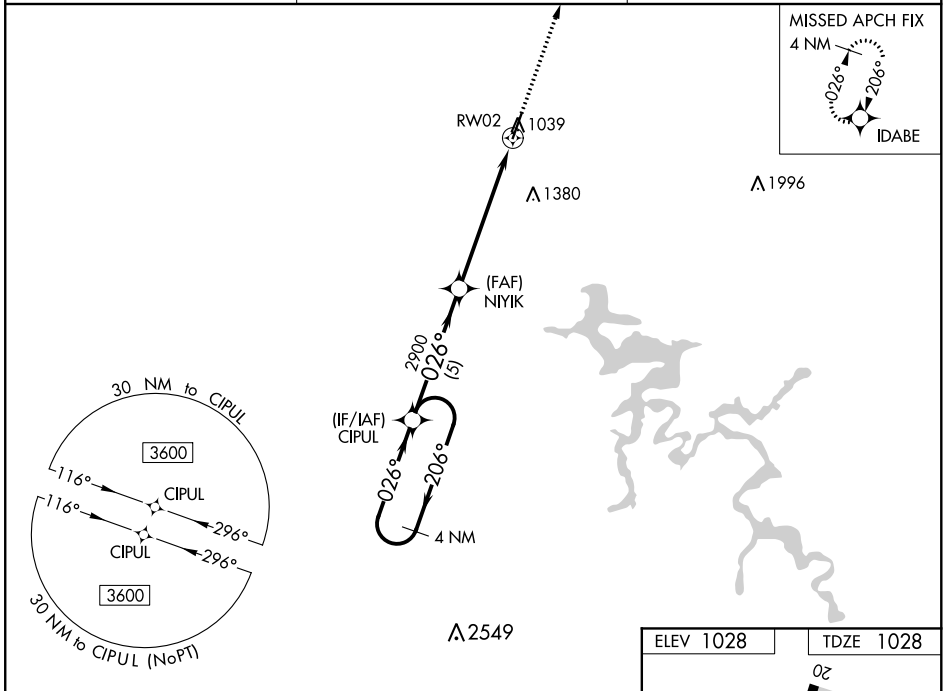
# RNAV (GPS) RWY 2

MOREHEAD-ROWAN COUNTY CLYDE A THOMAS RGNL (SYM)

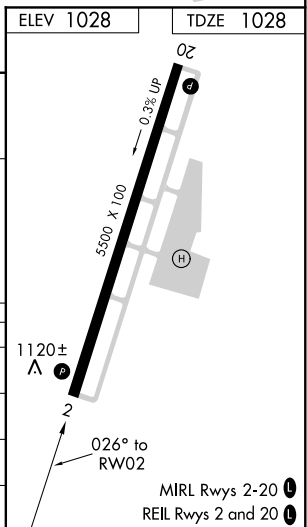
**T** For uncompensated Baro-VNAV systems, LNAV/VNAV NA below -17°C (2°F) or above 54°C (130°F). DME/DME RNP-0.3 NA. Baro-VNAV and VDP NA when using Mount Sterling altimeter setting. When local altimeter setting not received, use Mount Sterling altimeter setting; increase all DA 50 feet and all MDA 60 feet; increase LPV all Cats and LNAV Cats C/D visibility 1/8 mile, LNAV/VNAV all Cats visibility 1/4 mile, and Circling Cats C/D visibility 1/4 mile.

**MISSED APPROACH:**  
Climb to 3600 direct IDABE and hold.

AWOS-3 <b>119.95</b>	INDIANAPOLIS CENTER <b>124.225 360.725</b>	UNICOM <b>122.7 (CTAF) 0</b>
-------------------------	---	---------------------------------



CATEGORY	A	B	C	D
LPV DA		1228-3/4	200 (200-3/4)	
LNAV/VNAV DA		1439-1 3/8	411 (500-1 3/8)	
LNAV MDA	1500-1	472 (500-1)	1500-1 3/8	472 (500-1 3/8)
<b>C</b> CIRCLING	1520-1	492 (500-1)	1760-2 732 (800-2)	1820-2 1/2 792 (800-2 1/2)



SE-1, 07 OCT 2021 to 04 NOV 2021

SE-1, 07 OCT 2021 to 04 NOV 2021