

WAAS CH <b>42837</b> W18A	APP CRS <b>181°</b>	Rwy ldg TDZE Apt Elev	<b>3984</b> <b>259</b> <b>259</b>
---------------------------------	------------------------	-----------------------------	---

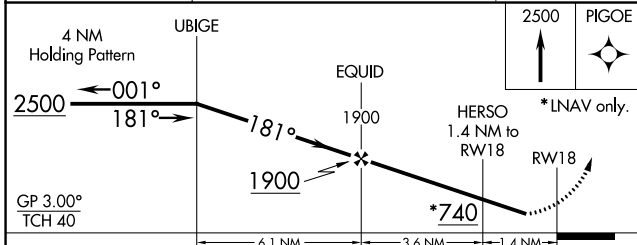
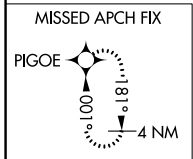
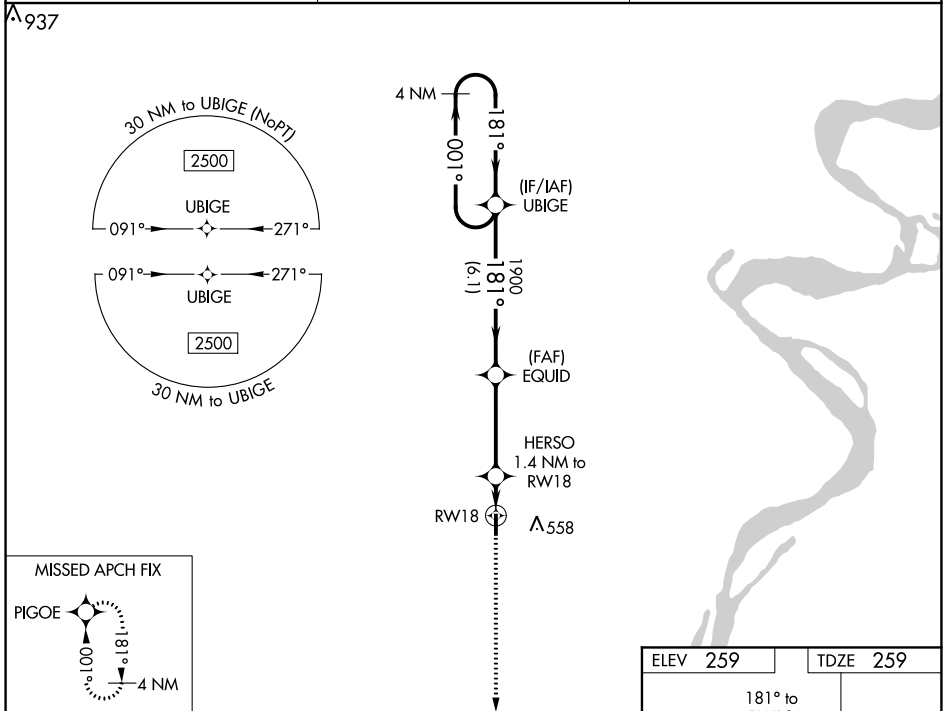
# RNAV (GPS) RWY 18

STEELE MUNI (M12)

**⚠** Baro-VNAV NA. Use Blytheville Muni altimeter setting; when not received, use Arkansas Intl altimeter setting. DME/DME RNP-0.3 NA. Helicopter visibility reduction below 3/4 SM NA.

**⚠ NA** MISSED APPROACH: Climb to 2500 direct PIGOE and hold.

HKA ASOS <b>135.025</b>	MEMPHIS CENTER <b>134.65 316.15</b>	UNICOM <b>122.8 (CTAF) 0</b>
----------------------------	--	---------------------------------



ELEV 259	TDZE 259
MIRL Rwy 18-36 0	

CATEGORY	A	B	C	D
LPV DA	531-1	272 (300-1)		NA
LNAV/VNAV DA	539-1	280 (300-1)		NA
LNAV MDA	660-1	401 (500-1)	660-1 1/8 401 (500-1 1/8)	NA
<b>C</b> CIRCLING	700-1 441 (500-1)	900-1 641 (700-1)	900-2 641 (700-2)	NA

NC-3, 07 OCT 2021 to 04 NOV 2021

NC-3, 07 OCT 2021 to 04 NOV 2021