

RNAV (GPS) RWY 35

APCH CRS **346°**
 Rwy ldg **3820**
 THRE **891**
 Arpt Elev **933**

AL-10651 (USAF)

TATALINA LRSS (PATL)

⚠ * Circling not authorized west of Runway 17/35
 DME/DME RNP 0.3 NA
 Night Operations not authorized.

MISSED APPROACH: Climbing right turn to 5000 direct BRYCI and hold. Continue climb and hold to 5000.

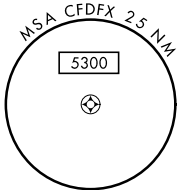
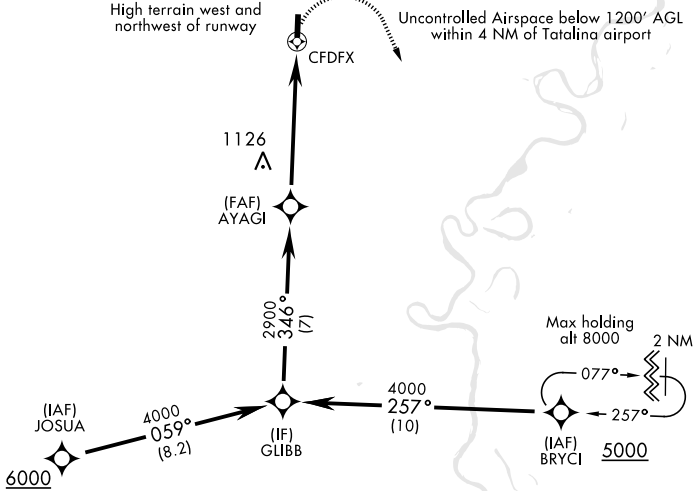
KENAI RADIO
122.3

UNICOM
126.2 (CTAF) 364.2

AWOS-3

High terrain west and northwest of runway

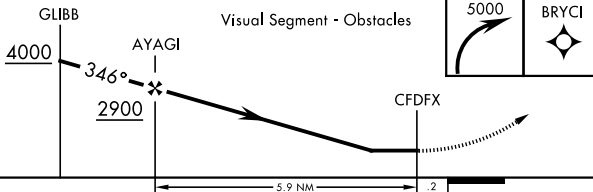
Uncontrolled Airspace below 1200' AGL within 4 NM of Tatalina airport



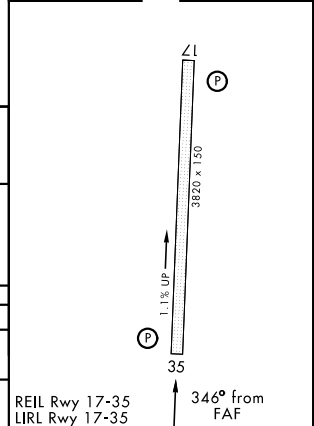
NOT FOR CIVIL USE
MILITARY CERTIFIED AIRCREWS OR AUTHORIZED CONTRACT AIRCRAFT ONLY

EMERG SAFE ALT 100 NM 11,800

ELEV 933 THRE 891



| CATEGORY | A | B | C | D |
|------------------|-------------------------------|---------------------------------|-------------------------|----|
| LNAV MDA | 1640-1 749 (800-1) | 1640-1 1/4 749 (800-1 1/4) | 1640-2 749 (800-2) | NA |
| CIRCLING* | 1800-1 1/4 867 (900-1 1/4) | 2340-1 1/2 1407 (1500-1 1/2) | 2880-3 1947 (2000-3) | NA |



REIL Rwy 17-35
 LIRL Rwy 17-35

RNAV (GPS) RWY 35

AK, 07 OCT 2021 to 02 DEC 2021

AK, 07 OCT 2021 to 02 DEC 2021