

APCH CRS 207°	Rwy ldg TDZE Arprt Elev	N/A N/A 933
-------------------------	-------------------------------	--------------------------

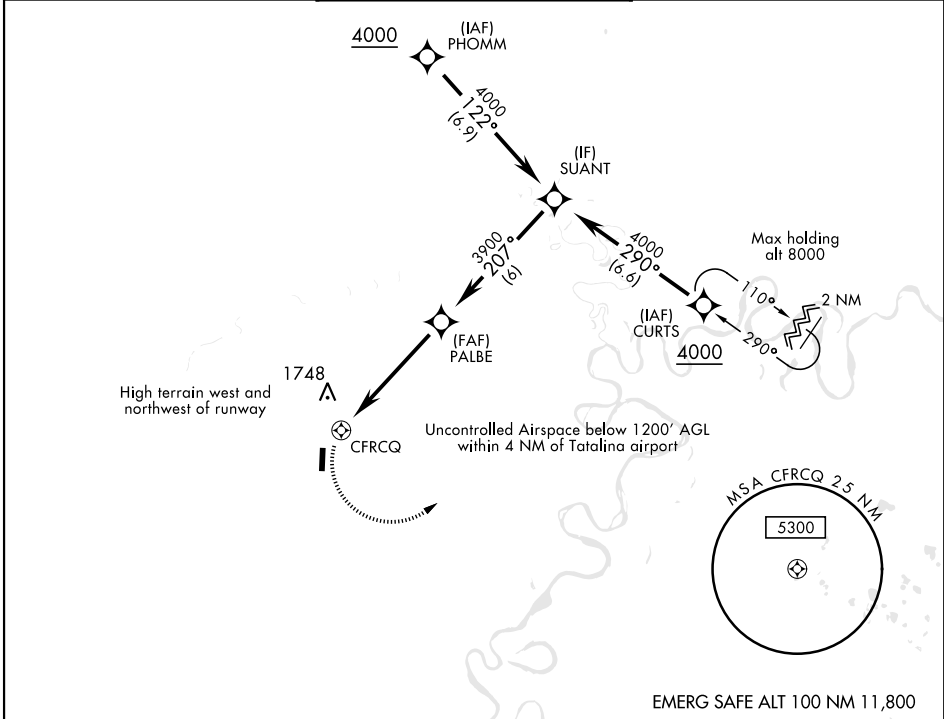
AL-10651 [USAF]

TATALINA LRSS (PATL)

⚠ * Circling not authorized west of Runway 17/35
DME/DME RNP 0.3 NA
Night Operations not authorized.

MISSED APPROACH: Climbing left turn to 4000 direct CURTS and hold.

KENAI RADIO 122.3	UNICOM 126.2 (CTAF) 364.2	AWOS-3
-----------------------------	-------------------------------------	--------

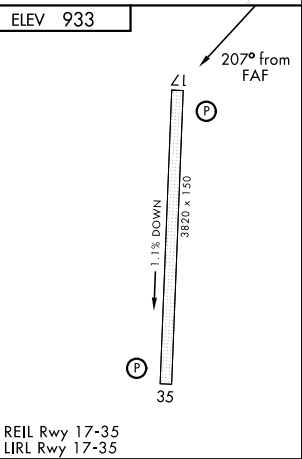
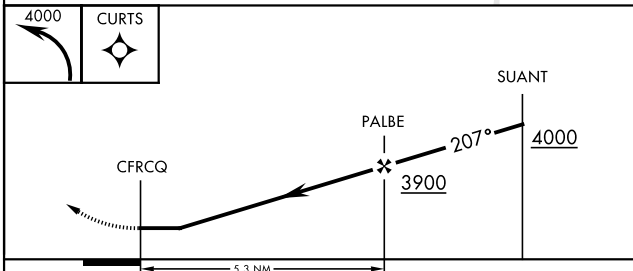


AK, 07 OCT 2021 to 02 DEC 2021

AK, 07 OCT 2021 to 02 DEC 2021

NOT FOR CIVIL USE
MILITARY CERTIFIED AIRCREWS OR
AUTHORIZED CONTRACT AIRCRAFT ONLY

EMERG SAFE ALT 100 NM 11,800



CATEGORY	A	B	C	D
CIRCLING*	1800-1¼ 867 (900-1¼)	2340-1½ 1407 (1500-1½)	2880-3 1947 (2000-3)	NA

REIL Rwy 17-35
LIRL Rwy 17-35