

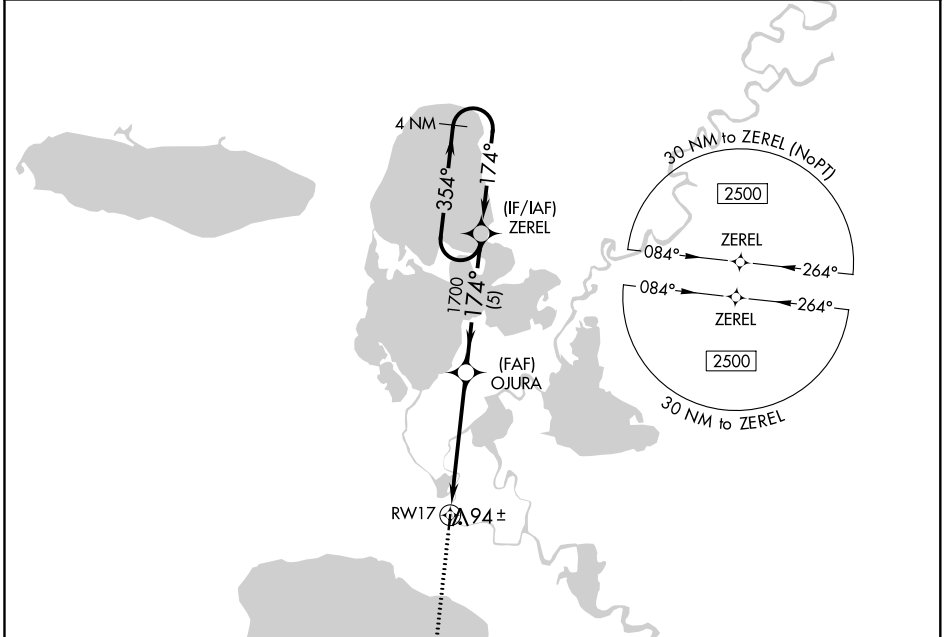
APP CRS	Rwy Idg	3000
174°	TDZE	48
	Apt Elev	48

RNAV (GPS) RWY 17

KASIGLUK (Z09) (PFKA)

 	DME/DME RNP-0.3 NA. Use Nunapitchuk altimeter setting, when not received, use Bethel altimeter setting.	MISSED APPROACH: Climb to 2600 direct UNAWO and hold.

16A/PPIT AWOS-3P 121.55	BET/PABE ASOS 135.45	ANCHORAGE CENTER 125.2 372.0	CTAF 122.9 0
-----------------------------------	--------------------------------	--	------------------------



AK, 07 OCT 2021 to 02 DEC 2021

AK, 07 OCT 2021 to 02 DEC 2021

