

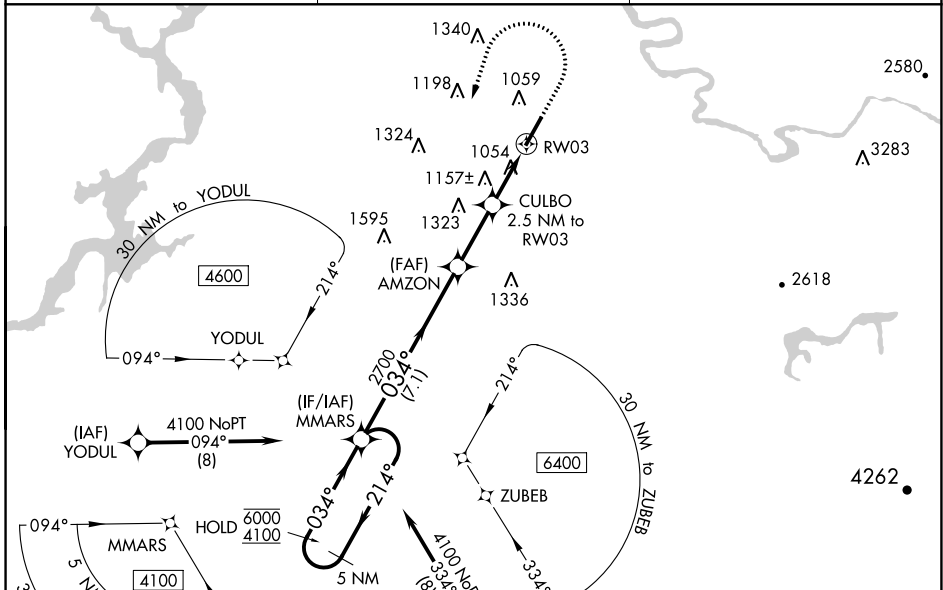
WAAS CH <b>99632</b> <b>W03A</b>	APP CRS <b>034°</b>	Rwy Idg TDZE Apt Elev	<b>6200</b> <b>834</b> <b>866</b>
--	------------------------	-----------------------------	---

# RNAV (GPS) RWY 3

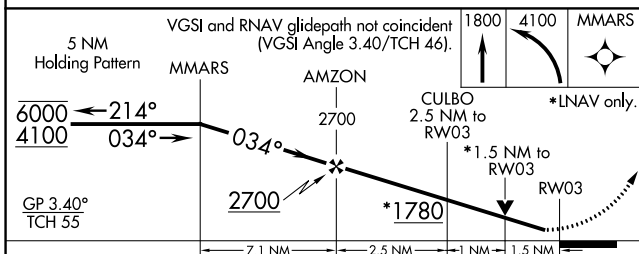
CLEVELAND RGNL JETPORT (RZR)

RNP APCH.	<p><b>MISSED APPROACH:</b> Climb to 1800 then climbing left turn to 4100 direct MMARS and hold, continue climb-in-hold to 4100.</p>
<p><b>▼</b> Rwy 3 helicopter visibility reduction below 3/4 SM NA. <b>▲</b> For uncompensated Baro-VNAV systems, LNAV/VNAV NA below -16°C or above 54°C.</p>	

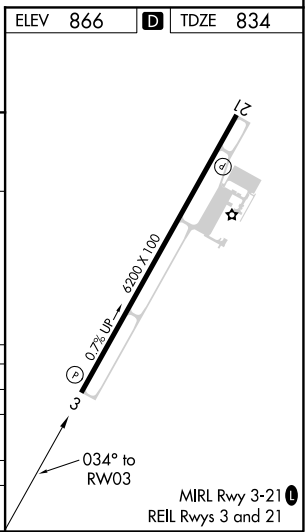
AWOS-3 <b>120.475</b>	CHATTANOOGA APP CON* <b>125.1</b>	UNICOM <b>122.7 (CTAF) 0</b>
--------------------------	--------------------------------------	---------------------------------



ELEV 866	<b>D</b> TDZE 834
----------	-------------------



CATEGORY	A	B	C	D
LPV DA	1034-3/4	200 (200-3/4)	1104-7/8	270 (300-7/8)
LNAV/VNAV DA	1437-13/4		603 (600-13/4)	
LNAV MDA	1420-1	586 (600-1)	1420-13/4	586 (600-13/4)
<b>C</b> CIRCLING	1460-1	594 (600-1)	1580-2	1780-3
			714 (800-2)	914 (1000-3)



SE-1, 07 OCT 2021 to 04 NOV 2021

SE-1, 07 OCT 2021 to 04 NOV 2021

MIRL Rwy 3-21  
REIL Rwy 3 and 21