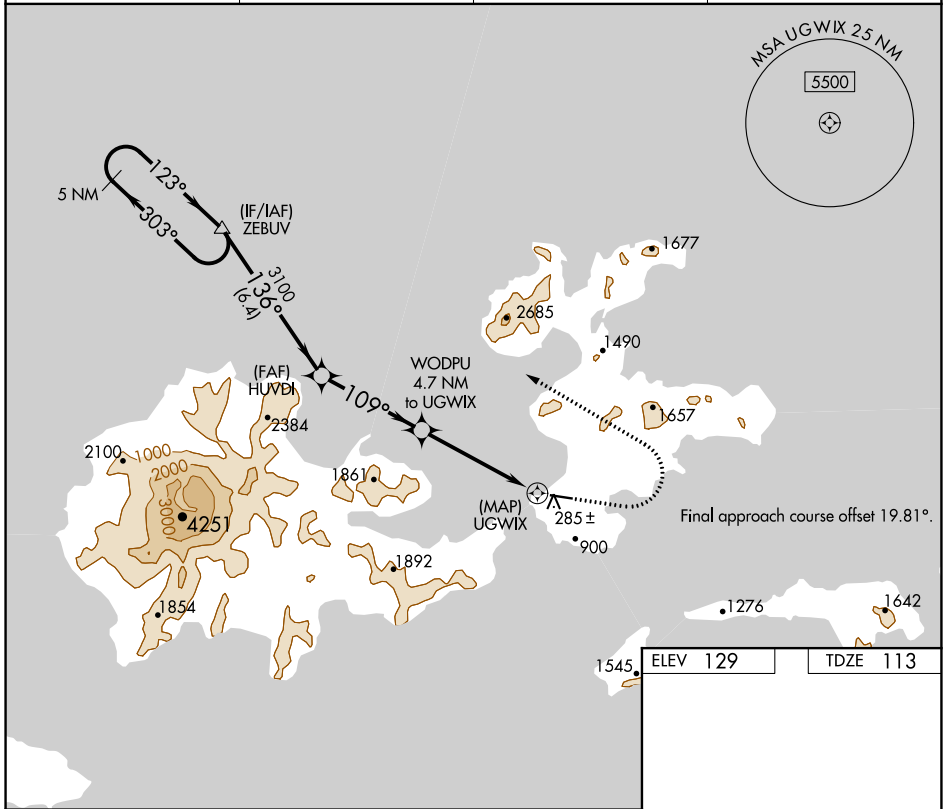


APP CRS	Rwy Idg	4500
109°	TDZE	113
	Apt Elev	129

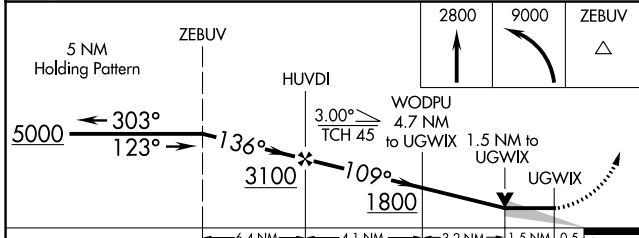
RNAV (GPS) RWY 9

AKUTAN (7AK)(PAUT)

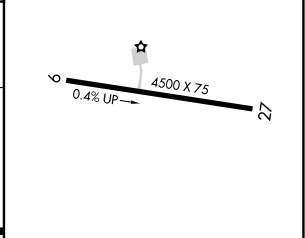
	DME/DME RNP-0.3 NA. Procedure NA at night.	MISSED APPROACH: Climb to 2800 then climbing left turn to 9000 direct ZEBUV and hold, continue climb-in-hold to 9000.	
	AWOS-3P 129.05	ANCHORAGE CENTER 121.4	GCO 130.3



ELEV	129	TDZE	113
------	-----	------	-----



5 NM Holding Pattern	ZEBUV	2800	9000	ZEBUV
5000	303°	123°	136°	3100
			109°	1800
				UGWIX



CATEGORY	A	B	C	D
LNVA MDA	780-1 667 (700-1)	780-1 667 (700-1)	780-1 667 (700-1)	780-1 667 (700-1)
CIRCLING	1020-1 1/4 891 (900-1 1/4)	1200-1 1/2 1071 (1100-1 1/2)	1600-3 1471 (1500-3)	1960-3 1831 (1900-3)

MIRL Rwy 9-27

AK, 07 OCT 2021 to 02 DEC 2021

AK, 07 OCT 2021 to 02 DEC 2021