


|  |                        |   |
|--|------------------------|---|
| WAAS<br>CH <b>93742</b><br><b>W35A</b> | APP CRS<br><b>353°</b> | Rwy Idg<br>TDZE <b>1409</b><br>Apt Elev <b>1409</b> |
|--|------------------------|---|

# RNAV (GPS) RWY 35


SIoux COUNTY RGnL (SXX)

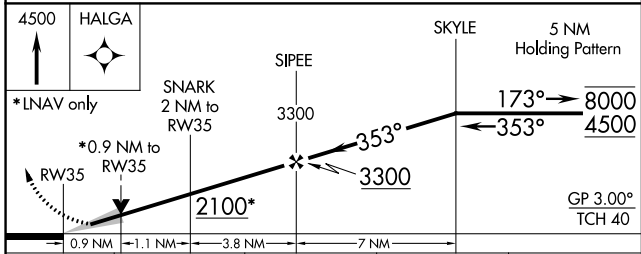
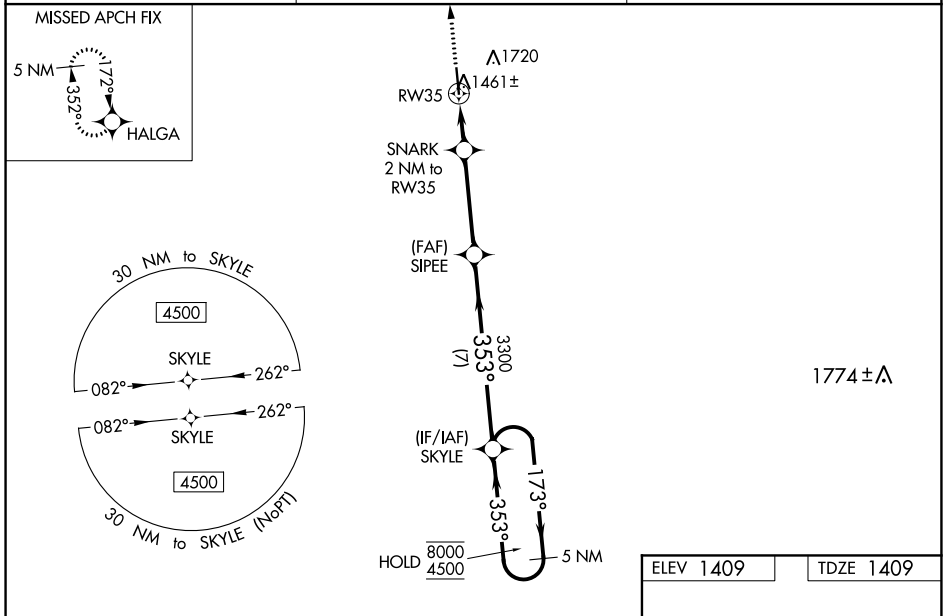
**RNP APCH.**


**⚠** Baro-VNAV and VDP NA when using Le Mars altimeter setting. For uncompensated Baro-VNAV systems, LNAV/VNAV NA below -17°C or above 54°C. When local altimeter setting not received; use Le Mars altimeter setting; increase DA 59 feet and all MDA 60 feet, increase LNAV visibility Cat C/D to 5/8 SM. For inop ALS, increase LNAV/VNAV all Cats visibility to 3/4 SM, and LNAV Cat C/D visibility to 7/8 SM. For inop ALS when using Le Mars altimeter setting increase LNAV/VNAV all Cats visibility to 7/8 SM.

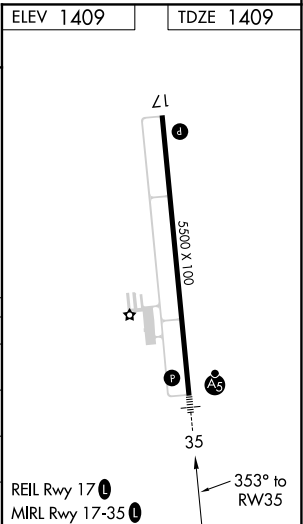
**MALSR** 

**MISSED APPROACH:** Climb to 4500 direct HALGA and hold.

|                           |  |   |
|---------------------------|--|---|
| AWOS-3P<br><b>120.075</b> | SIoux CITY APP CON *<br><b>124.6 307.0</b> | UNICOM<br><b>122.7 (CTAF)</b>  |
|---------------------------|--|---|



| CATEGORY   | A                     | B                     | C                     | D                             |
|--|-----------------------|-----------------------|-----------------------|-------------------------------|
| LPV DA   |                       | 1609-1/2              | 200 (200-1/2)         |                               |
| LNAV/VNAV DA   |                       | 1659-1/2              | 250 (300-1/2)         |                               |
| LNAV MDA   |                       | 1720-1/2              | 311 (400-1/2)         |                               |
|  CIRCLING | 1820-1<br>411 (500-1) | 2080-1<br>671 (700-1) | 2080-2<br>671 (700-2) | 2080-2 1/4<br>671 (700-2 1/4) |



NC-3, 07 OCT 2021 to 04 NOV 2021

NC-3, 07 OCT 2021 to 04 NOV 2021