


LOC I-BTL 110.5	APP CRS 227°	Rwy Idg 10004 TDZE 929 Apt Elev 952
---------------------------	------------------------	--


ILS or LOC RWY 23R

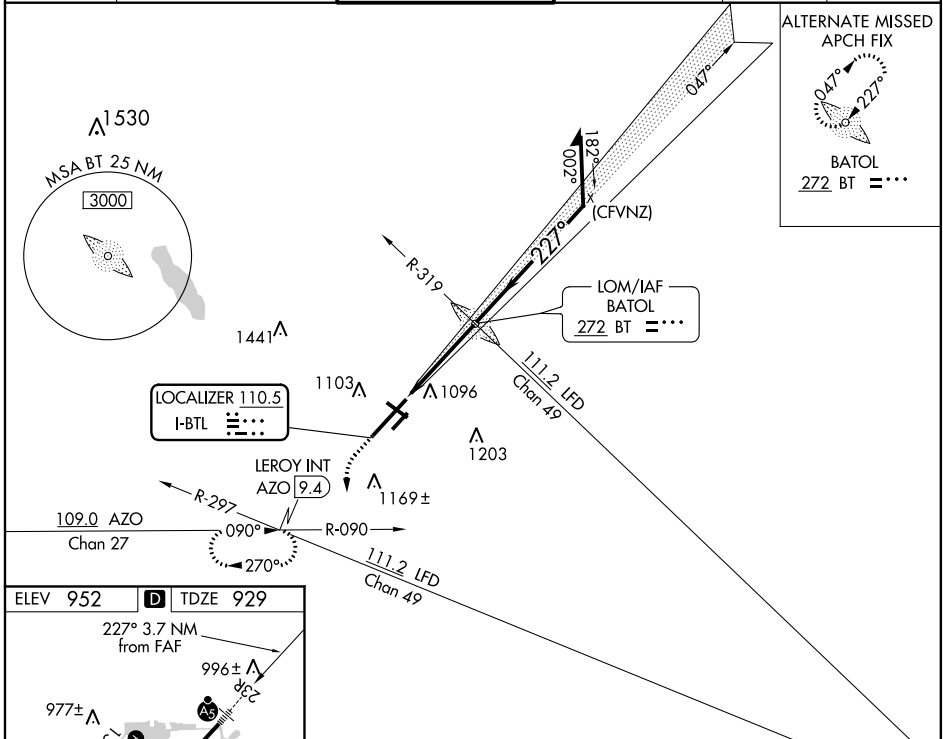
BATTLE CREEK EXEC AT KELLOGG FLD (BTL)

DME required, RADAR required for procedure entry.

⚠ Circling Rwy 5R, 23L NA. Circling Rwy 31 NA at night. When local altimeter setting not received, use Grand Rapids altimeter setting: increase DA to 1236 feet and increase all MDA 120 feet. Increase S-LOC 23R Cats C/D visibility to 1¼ SM, Circling Cat C visibility to 2 SM and Cat D visibility to 2¼ SM. For inop ALS, increase S-LOC 23R Cat C/D visibility to 1¾ SM. For inop ALS when using Grand Rapids altimeter setting, increase S-ILS 23R all Cats visibility to RVR 5000. #RVR 1800 authorized with use of FD or AP or HUD to DA (NA when using Grand Rapids altimeter setting).

MALSR  MISSED APPROACH: Climb to 1500 then climbing left turn to 3000 on heading 215° and AZO VOR/DME R-090 to LEROY/AZO 9.4 DME and hold, continue climb-in-hold to 3000.

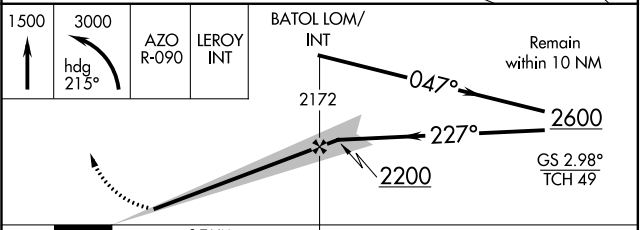
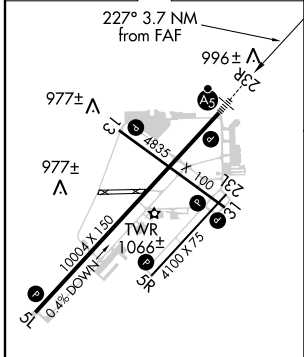
ATIS 128.325	GREAT LAKES APP CON ★ 119.2 239.25	BATTLE CREEK TOWER ★ 126.825	GND CON 121.7	UNICOM 122.95	CTAF 126.825 
------------------------	--	--	-------------------------	-------------------------	--


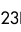



ALTERNATE MISSED APCH FIX

BATOL
272 BT =***

ELEV 952	D	TDZE 929
----------	----------	----------



HIRL Rwy 5L-23R 
 MIRL Rwy 13-31 and 5R-23L 
 REL Rwy 5L, 5R, 13, 23L and 31L 

FAF to MAP 3.7 NM

Knots	60	90	120	150	180
Min:Sec	3:42	2:28	1:51	1:29	1:14

CATEGORY	A	B	C	D
S-ILS 23R	#1129/24 200 (200-½)			
S-LOC 23R	1400/24	471 (500-½)	1400/50	471 (500-1)
C CIRCLING	1420-1 468 (500-1)	1480-1 528 (600-1)	1520-1½ 568 (600-½)	1520-2 568 (600-2)

EC-1, 04 NOV 2021 to 02 DEC 2021

EC-1, 04 NOV 2021 to 02 DEC 2021